



Sistem FURADO – A

OPIS

Sistem šahta sastoji se od kalcij-silikatnih protu-požarnih ploča sa unutarnjim cijevima tvrtke Jeremias EW-KL, EW-AL-BI, EW-PPS ili EW-PP-FLEX, ovisno o temperaturi ispušnih plinova sa izolacijskim oblogama od 25 mm. Izvedba iznad krova moguća sa šahtom i oblogom. Alternativno Montažni šaht za prihvrat CE-certificiranih unutarnjih cijevi.

MATERIJAL

Kalcij-silikatne protupožarne ploče

DEBLJINA STIJENKE

Standardno: 60 mm (temperatura ispušnih plinova $\leq 600^\circ\text{C}$)
Optionalno: 50 mm (temperatura ispušnih plinova $\leq 400^\circ\text{C}$)

DIMENZIJE OKNA IZNUTRA

140 x 140 mm do 330 x 330 mm, ostali na upit

IZOLACIJA

do 160°C temperature ispušnih plinova bez izolacije
od 160°C temperature ispušnih plinova sa min. 25 mm izolacijskim oblogama

PRSTENASTI RAZMAK

do 160°C između unutarnje cijevi i unutarnje strane šahta najmanje 20 mm
od 160°C između izolacije i unutarnje strane šahta najmanje 20 mm



SVOJSTVA

- Vrlo dobra izolacijska svojstva
- Praktičan i jednostavan za sastavljanje zahvaljujući maloj težini
- Tehnologija sigurnog spajanja pero/utor
- Različita rješenja unutarnjih cijevi i obloga zadovoljiti će sve zahtjeve
- Male udaljenosti do zapaljivih komponenti
- 25 m konstrukcijske visine šahta bez međupodupirača
- Statički set za visine montaže iznad krova do 3 m

PODRUČJA PRIMJENE

- Standardna ložišta na ulje, plin
- Novogradnja i adaptacija
- Kondenzacijski kotlovi
- CHP, motori s unutarnjim izgaranjem
- Toplinske pumpe na plin
- Gorive ćelije

BROJ ODOBRENJA

Z - 7.4 - 3478 / Z - 7.4 - 3483

Z - 7.4 - 3482

CE – BROJ CERTIFIKATA

0036 CPR 9174 074

0036 CPR 9174 075

CE-KLASIFIKACIJA PREMA DIN EN 14471

EW-PP-FLEX DN60-110 T120 - H1 - W2 - O00 - LI - E - U0

EW-PP-FLEX > DN110-160 T120 - P1 - W2 - O00 - LI - E - U0

EW-PPS < DN200 T120 - H1 - W2 - O20 - LI - E - U

EW-PPS \geq DN200 T120 - P1 - W2 - O20 - LI - E - U

KLASIFIKACIJA PREMA DIN V 18160-1

T160 - N1 / P1 / H1 - W - 2 - O00 - LA90¹ odnosno LA302

T200 - N1 / P1 / H1 - W - 2 - O00 - LA90²³

T400 - N1 / P1 / H1 - W - 2 - O50 - LA90²³

T600 - N1 / P1 / H1 - W - 2 - O50 - LA90¹³

KLASIFIKACIJA PREMA DIN EN 1856-1

T120 - P1 - W - V2 - L50050 - O00 (LA90 / LA30)

T160 - N1 / P1 / H1 - W - V2 - L50050 - O00 (LA90¹ / LA30²)

T200 - N1 / P1 / H1 - W - V2 - L50050 - O003 (LA90²)

T400 - N1 / P1 / H1 - W - V2 - L50050 - Oxx3 (LA90²)

T600 - N1 / P1 / H1 - W - V2 - L50050 - Oxx3 (LA90¹)

¹ 60 mm šaht ² 50 mm šaht ³ sa 25 mm izolacije

Potreban je prstenasti razmak od min. 20 mm

xx= razmaci do zapaljivih komponenti je ovisan o \varnothing , vidi Izjavu o svojstvima

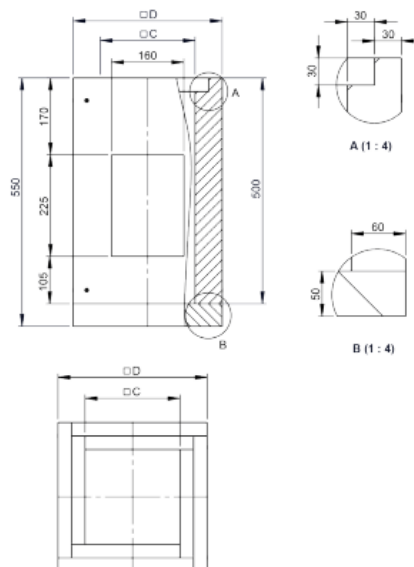


Sistem FURADO – A

ELEMENTI ŠAHTA

LS60-1250

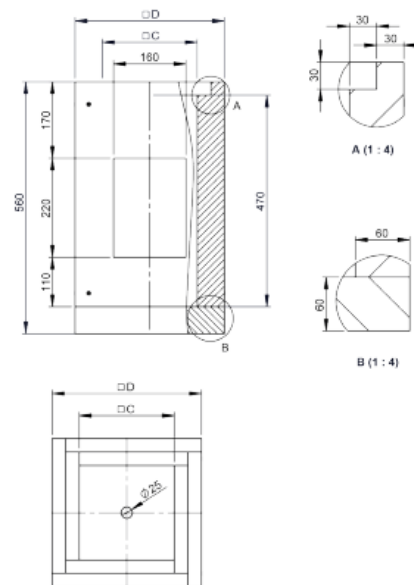
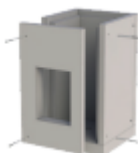
element podnožja 500 mm za kolektor
kondenzata sa otvorom



Ø izvana	Ø iznutra	Code	A	B	C	D	E	F	kg
260x260	140x140	LS60140X140-1250			140	260			7.8
280x280	160x160	LS60160X160-1250			160	280			8.6
310x310	190x190	LS60190X190-1250			190	310			10
330x330	210x210	LS60210X210-1250			210	330			10.9
350x350	230x230	LS60230X230-1250			230	350			11.8
360x360	240x240	LS60240X240-1250			240	360			12.3
380x380	260x260	LS60260X260-1250			260	380			13.3
410x410	290x290	LS60290X290-1250			290	410			14.7
430x430	310x310	LS60310X310-1250			310	430			15.7
450x450	330x330	LS60330X330-1250			330	450			16.8

LS60-1500

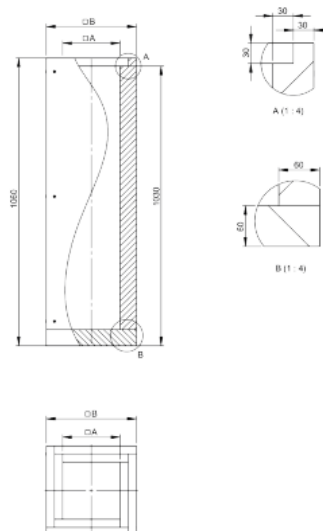
početni element sa izrezom za vrata revizije i
otvorom za odvod kondenzata dolje
(dodatak za LS1250)



Ø izvana	Ø iznutra	Code	A	B	C	D	E	F	kg
260x260	140x140	LS60140X140-1500			140	260			7.8
280x280	160x160	LS60160X160-1500			160	280			8.6
310x310	190x190	LS60190X190-1500			190	310			10
330x330	210x210	LS60210X210-1500			210	330			10.9
350x350	230x230	LS60230X230-1500			230	350			11.8
360x360	240x240	LS60240X240-1500			240	360			12.3
380x380	260x260	LS60260X260-1500			260	380			13.3
410x410	290x290	LS60290X290-1500			290	410			14.7
430x430	310x310	LS60310X310-1500			310	430			15.7
450x450	330x330	LS60330X330-1500			330	450			16.8

LS60-04

početni element 1000 mm labav/pričvršćen vijkom sa
podnom pločom



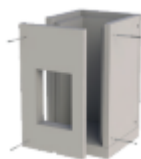
Ø izvana	Ø iznutra	Code	A	B	C	D	E	F	kg
260x260	140x140	LS60140X140-04	140	260					15.6
280x280	160x160	LS60160X160-04	160	280					17.2
310x310	190x190	LS60190X190-04	190	310					19.6
330x330	210x210	LS60210X210-04	210	330					21.3
350x350	230x230	LS60230X230-04	230	350					23
360x360	240x240	LS60240X240-04	240	360					23.8
380x380	260x260	LS60260X260-04	260	380					25.5
410x410	290x290	LS60290X290-04	290	410					28
430x430	310x310	LS60310X310-04	310	430					29.8
450x450	330x330	LS60330X330-04	330	450					31.5



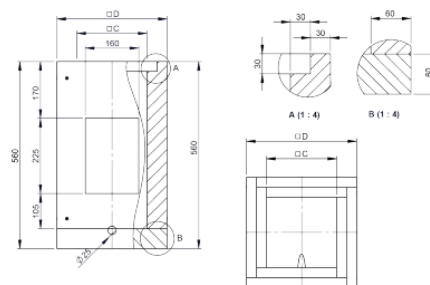
Sistem FURADO – A

LS60-05

početni element 500 mm sa izrezom za vrata za
čišćenje i otvorom za odvod kondenzata bočno

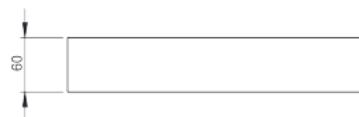
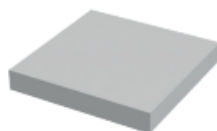


Ø izvana	Ø iznutra	Code	A	B	C	D	E	F	kg
260x260	140x140	LS60140X140-05	140	260					7.7
280x280	160x160	LS60160X160-05	160	280					8.6
310x310	190x190	LS60190X190-05	190	310					9.9
330x330	210x210	LS60210X210-05	210	330					10.9
350x350	230x230	LS60230X230-05	230	350					11.8
360x360	240x240	LS60240X240-05	240	360					12.3
380x380	260x260	LS60260X260-05	260	380					13.2
410x410	290x290	LS60290X290-05	290	410					14.7
430x430	310x310	LS60310X310-05	310	430					15.7
450x450	330x330	LS60330X330-05	330	450					16.7

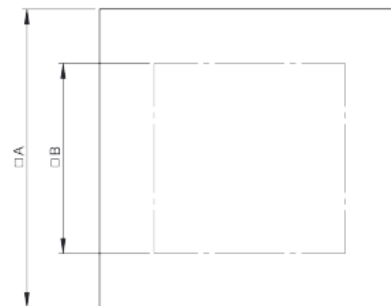


LS60-1658

podna ploča



Ø izvana	Ø iznutra	Code	A	B	C	D	E	F	kg
260x260	140x140	LS60140X140-1658	260	140					1.2
280x280	160x160	LS60160X160-1658	280	160					1.4
310x310	190x190	LS60190X190-1658	310	190					1.7
330x330	210x210	LS60210X210-1658	330	210					2
350x350	230x230	LS60230X230-1658	350	230					2.2
360x360	240x240	LS60240X240-1658	360	240					2.3
380x380	260x260	LS60260X260-1658	380	260					2.6
410x410	290x290	LS60290X290-1658	410	290					3
430x430	310x310	LS60310X310-1658	430	310					3.3
450x450	330x330	LS60330X330-1658	450	330					3.6

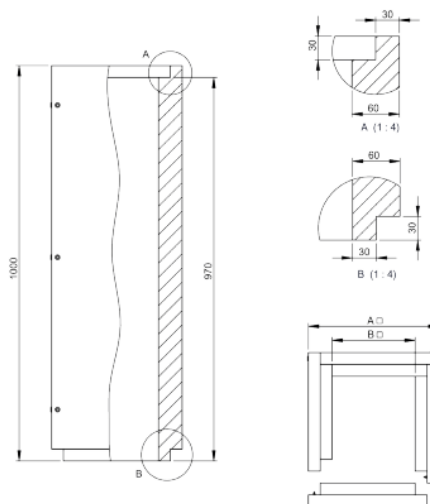


LS60-130

element šahta 1000 mm labav/pričvršćen vijkom



Ø izvana	Ø iznutra	Code	A	B	C	D	E	F	kg
260x260	140x140	LS60140X140-130	260	140					14
280x280	160x160	LS60160X160-130	280	160					15.4
310x310	190x190	LS60190X190-130	310	190					17.5
330x330	210x210	LS60210X210-130	330	210					18.9
350x350	230x230	LS60230X230-130	350	230					20.3
360x360	240x240	LS60240X240-130	360	240					21
380x380	260x260	LS60260X260-130	380	260					22.4
410x410	290x290	LS60290X290-130	410	290					24.5
430x430	310x310	LS60310X310-130	430	310					25.8
450x450	330x330	LS60330X330-130	450	330					27.2

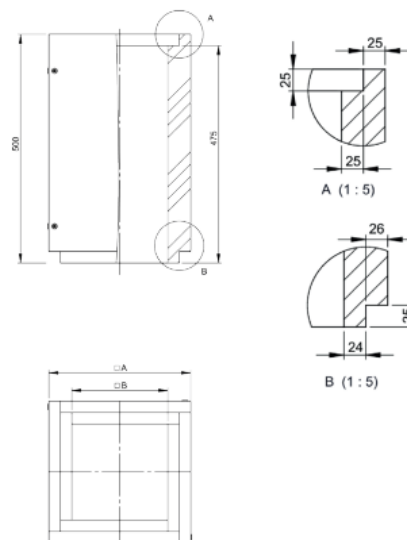




Sistem FURADO – A

LS60-140

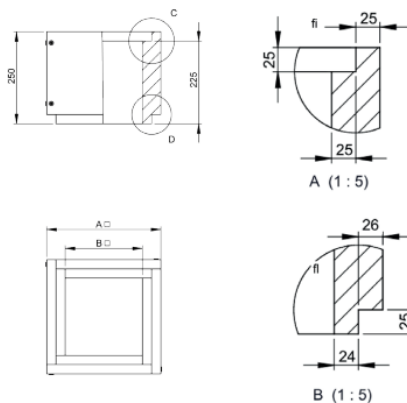
element šahta 500 mm labav/pričvrščen vijkom



Ø izvana	Ø iznutra	Code	A	B	C	D	E	F	kg
260x260	140x140	LS60140X140-140	240	140					5.4
280x280	160x160	LS60160X160-140	260	160					6
310x310	190x190	LS60190X190-140	290	190					6.8
330x330	210x210	LS60210X210-140	310	210					7.4
350x350	230x230	LS60230X230-140	330	230					8
360x360	240x240	LS60240X240-140	340	240					8.3
380x380	260x260	LS60260X260-140	360	260					8.8
410x410	290x290	LS60290X290-140	390	290					9.7
430x430	310x310	LS60310X310-140	410	310					10.3
450x450	330x330	LS60330X330-140	430	330					10.8

LS60-150

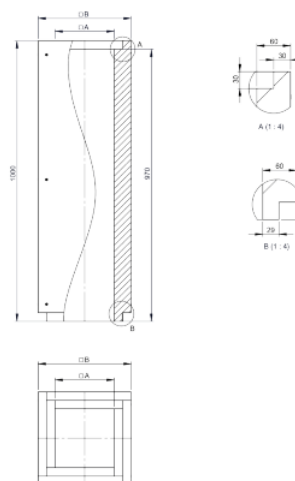
element šahta 250 mm labav/pričvrščen vijkom



Ø izvana	Ø iznutra	Code	A	B	C	D	E	F	kg
260x260	140x140	LS60140X140-150	240	140					2.6
280x280	160x160	LS60160X160-150	260	160					2.8
310x310	190x190	LS60190X190-150	290	190					3.2
330x330	210x210	LS60210X210-150	310	210					3.5
350x350	230x230	LS60230X230-150	330	230					3.8
360x360	240x240	LS60240X240-150	340	240					3.9
380x380	260x260	LS60260X260-150	360	260					4.2
410x410	290x290	LS60290X290-150	390	290					4.6
430x430	310x310	LS60310X310-150	410	310					4.9
450x450	330x330	LS60330X330-150	430	330					5.1

LS60-13

element šahta 1000 mm



Ø izvana	Ø iznutra	Code	A	B	C	D	E	F	kg
260x260	140x140	LS60140X140-13	140	260					14.1
280x280	160x160	LS60160X160-13	160	280					15.5
310x310	190x190	LS60190X190-13	190	310					17.6
330x330	210x210	LS60210X210-13	210	330					19
350x350	230x230	LS60230X230-13	230	350					20.4
360x360	240x240	LS60240X240-13	240	360					21.1
380x380	260x260	LS60260X260-13	260	380					22.5
410x410	290x290	LS60290X290-13	290	410					24.6
430x430	310x310	LS60310X310-13	310	430					26
450x450	330x330	LS60330X330-13	330	450					27.4



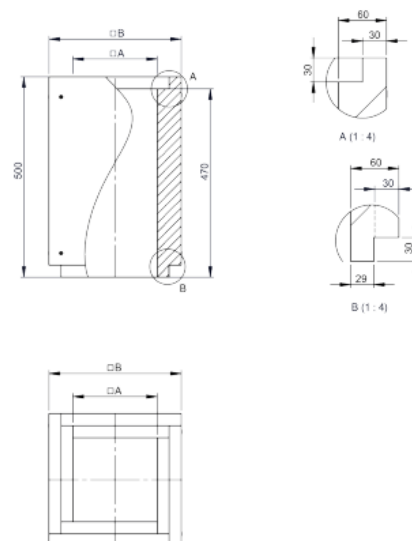
Sistem FURADO – A

LS60-14

element šahta 500 mm



Ø izvana	Ø iznutra	Code	A	B	C	D	E	F	kg
260x260	140x140	LS60140X140-14	140	260					6.9
280x280	160x160	LS60160X160-14	160	280					7.5
310x310	190x190	LS60190X190-14	190	310					8.5
330x330	210x210	LS60210X210-14	210	330					9.2
350x350	230x230	LS60230X230-14	230	350					9.9
360x360	240x240	LS60240X240-14	240	360					10.2
380x380	260x260	LS60260X260-14	260	380					10.9
410x410	290x290	LS60290X290-14	290	410					11.9
430x430	310x310	LS60310X310-14	310	430					12.6
450x450	330x330	LS60330X330-14	330	450					13.3

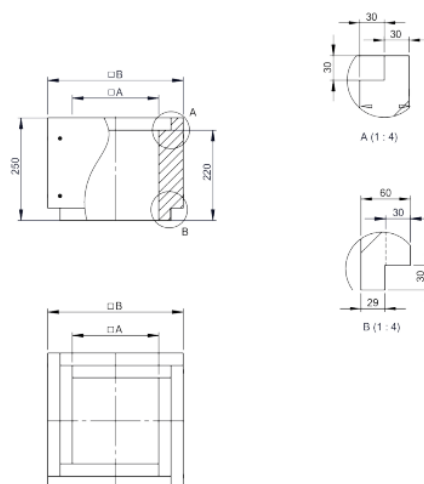


LS60-15

element šahta 250 mm



Ø izvana	Ø iznutra	Code	A	B	C	D	E	F	kg
260x260	140x140	LS60140X140-15	140	260					3.3
280x280	160x160	LS60160X160-15	160	280					3.6
310x310	190x190	LS60190X190-15	190	310					4
330x330	210x210	LS60210X210-15	210	330					4.4
350x350	230x230	LS60230X230-15	230	350					4.7
360x360	240x240	LS60240X240-15	240	360					4.8
380x380	260x260	LS60260X260-15	260	380					5.1
410x410	290x290	LS60290X290-15	290	410					5.6
430x430	310x310	LS60310X310-15	310	430					5.9
450x450	330x330	LS60330X330-15	330	450					6.3

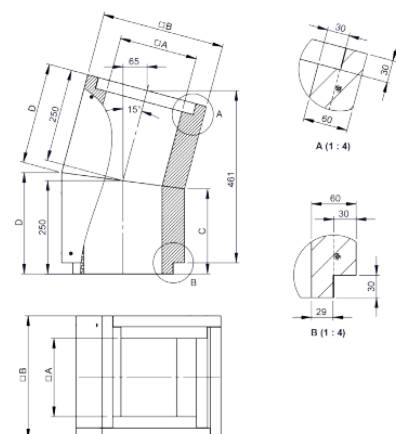


LS60-17

koljeno 15°



Ø izvana	Ø iznutra	Code	A	B	C	D	E	F	kg
260x260	140x140	LS60140X140-17	140	260	233	267			6.8
280x280	160x160	LS60160X160-17	160	280	232	268			7.4
310x310	190x190	LS60190X190-17	190	310	230	270			8.5
330x330	210x210	LS60210X210-17	210	330	228	272			9.1
350x350	230x230	LS60230X230-17	230	350	227	273			9.8
360x360	240x240	LS60240X240-17	240	360	226	274			10.2
380x380	260x260	LS60260X260-17	260	380	225	275			10.8
410x410	290x290	LS60290X290-17	290	410	223	277			11.8
430x430	310x310	LS60310X310-17	310	430	222	278			12.5
450x450	330x330	LS60330X330-17	330	450	220	280			13.2



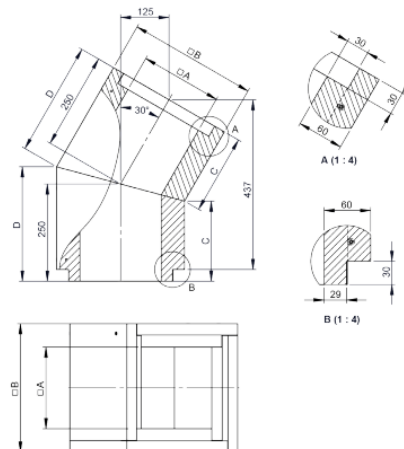


Sistem FURADO – A

LS60-18
koljeno 30°



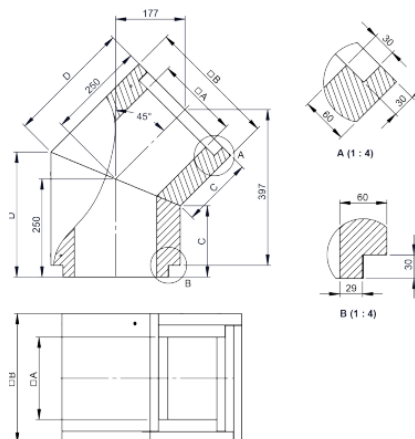
Ø izvana	Ø iznutra	Code	A	B	C	D	E	F	kg
260x260	140x140	LS60140X140-18	140	260	215	285			6.9
280x280	160x160	LS60160X160-18	160	280	212	288			7.5
310x310	190x190	LS60190X190-18	190	310	208	292			8.6
330x330	210x210	LS60210X210-18	210	330	206	294			9.2
350x350	230x230	LS60230X230-18	230	350	203	297			9.9
360x360	240x240	LS60240X240-18	240	360	202	298			10.2
380x380	260x260	LS60260X260-18	260	380	199	301			10.9
410x410	290x290	LS60290X290-18	290	410	195	305			11.9
430x430	310x310	LS60310X310-18	310	430	192	308			12.6
450x450	330x330	LS60330X330-18	330	450	190	310			13.3



LS60-19
koljeno 45°



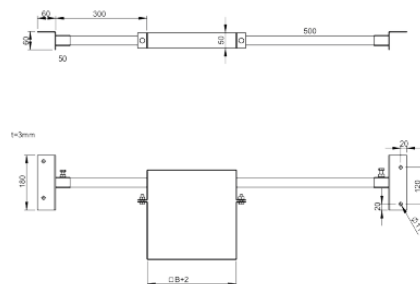
Ø izvana	Ø iznutra	Code	A	B	C	D	E	F	kg
260x260	140x140	LS60140X140-19	140	260	196	304			6.9
280x280	160x160	LS60160X160-19	160	280	192	308			7.5
310x310	190x190	LS60190X190-19	190	310	186	314			8.6
330x330	210x210	LS60210X210-19	210	330	182	318			9.2
350x350	230x230	LS60230X230-19	230	350	178	322			9.9
360x360	240x240	LS60240X240-19	240	360	175	325			10.2
380x380	260x260	LS60260X260-19	260	380	171	329			10.9
410x410	290x290	LS60290X290-19	290	410	165	335			11.9
430x430	310x310	LS60310X310-19	310	430	161	339			12.6
450x450	330x330	LS60330X330-19	330	450	157	343			13.3



LS60-55
krovni držač lagani za šaht

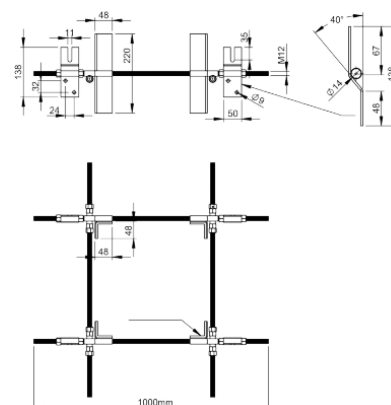


Ø izvana	Ø iznutra	Code	A	B	C	D	E	F	kg
260x260	140x140	LS60140X140-55		260					2.8
280x280	160x160	LS60160X160-55		280					2.9
310x310	190x190	LS60190X190-55		310					3
330x330	210x210	LS60210X210-55		330					3
350x350	230x230	LS60230X230-55		350					3.1
360x360	240x240	LS60240X240-55		360					3.2
380x380	260x260	LS60260X260-55		380					3.2
410x410	290x290	LS60290X290-55		410					3.3
430x430	310x310	LS60310X310-55		430					3.4
450x450	330x330	LS60330X330-55		450					3.4

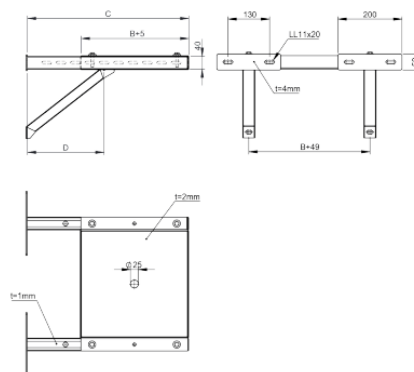




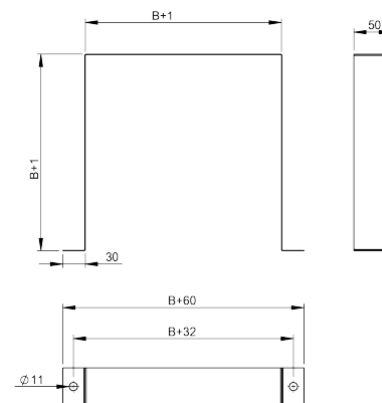
krovni držač univerzalni za šaht



konzola sa početnom pločom 500 mm



zidni držač za šaht



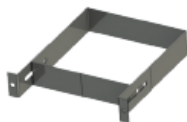
Ø izvana Ø iznutra		Code	A	B	C	D	E	F	kg
260x260	140x140	LS60140X140-21		260					0.2
280x280	160x160	LS60160X160-21		280					0.21
310x310	190x190	LS60190X190-21		310					0.23
330x330	210x210	LS60210X210-21		330					0.25
350x350	230x230	LS60230X230-21		350					0.26
360x360	240x240	LS60240X240-21		360					0.27
380x380	260x260	LS60260X260-21		380					0.28
410x410	290x290	LS60290X290-21		410					0.3
430x430	310x310	LS60310X310-21		430					0.32
450x450	330x330	LS60330X330-21		450					0.33



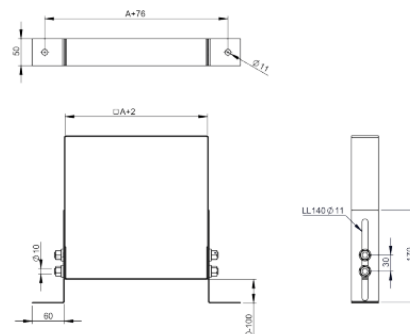
Sistem FURADO – A

LS60-822

zidni držač 0-100 mm za šaht



Ø izvana	Ø iznutra	Code	A	B	C	D	E	F	kg
260x260	140x140	LS60140X140-822	260						0.97
280x280	160x160	LS60160X160-822	280						1.02
310x310	190x190	LS60190X190-822	310						1.09
330x330	210x210	LS60210X210-822	330						1.14
350x350	230x230	LS60230X230-822	350						1.19
360x360	240x240	LS60240X240-822	360						1.21
380x380	260x260	LS60260X260-822	380						1.26
410x410	290x290	LS60290X290-822	410						1.34
430x430	310x310	LS60310X310-822	430						1.36
450x450	330x330	LS60330X330-822	450						1.41

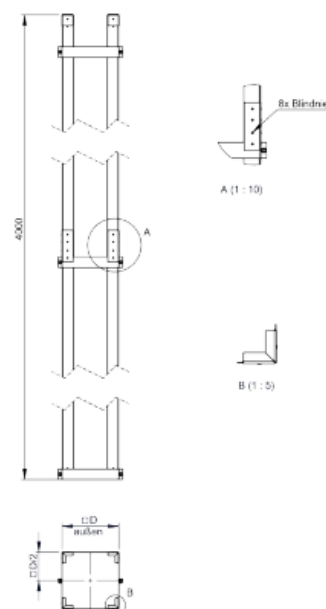


LS60-4-1502

statički komplet za šaht, visine 4 m sa 5 stremena, max.
preput 2 m



Ø izvana	Ø iznutra	Code	A	B	C	D	E	F	kg
260x260	140x140	LS60140X140-4-1502	140		260	266			22.65
280x280	160x160	LS60160X160-4-1502	160		280	286			22.81
310x310	190x190	LS60190X190-4-1502	190		310	316			23.05
330x330	210x210	LS60210X210-4-1502	210		330	336			23.21
350x350	230x230	LS60230X230-4-1502	230		350	356			23.37
360x360	240x240	LS60240X240-4-1502	240		360	366			23.44
380x380	260x260	LS60260X260-4-1502	260		380	386			23.6
410x410	290x290	LS60290X290-4-1502	290		410	416			23.84
430x430	310x310	LS60310X310-4-1502	310		430	436			24
450x450	330x330	LS60330X330-4-1502	330		450	456			24.16

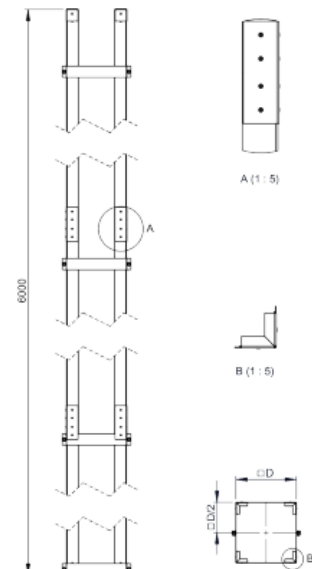


LS60-6-1502

statički komplet za šaht, visine 6 m sa 7 stremena, max.
preput 3 m



Ø außen	Ø innen	Code	A	B	C	D	E	F	kg
260x260	140x140	LS60140X140-6-1502	140		260	266			33.95
280x280	160x160	LS60160X160-6-1502	160		280	286			34.17
310x310	190x190	LS60190X190-6-1502	190		310	316			34.5
330x330	210x210	LS60210X210-6-1502	210		330	336			34.72
350x350	230x230	LS60230X230-6-1502	230		350	356			34.94
360x360	240x240	LS60240X240-6-1502	240		360	366			35.05
380x380	260x260	LS60260X260-6-1502	260		380	386			35.28
410x410	290x290	LS60290X290-6-1502	290		410	416			35.61
430x430	310x310	LS60310X310-6-1502	310		430	436			35.83
450x450	330x330	LS60330X330-6-1502	330		450	456			36.05

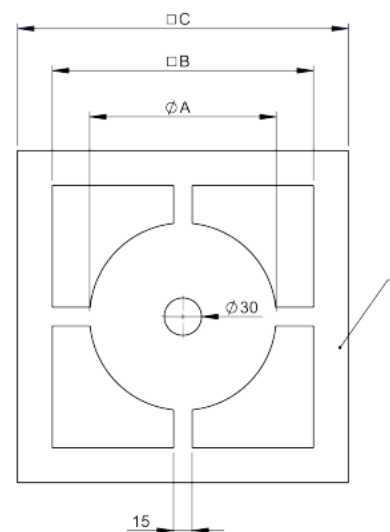




Sistem FURADO – A

LS601716

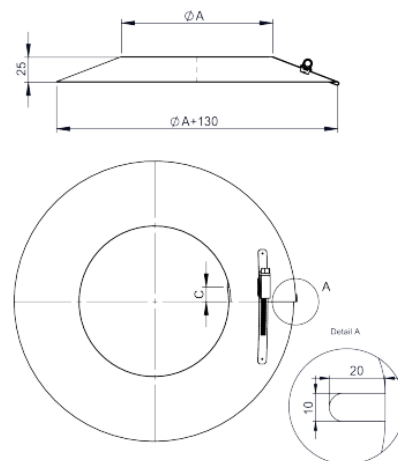
postavna ploča sa ventilacijom



Ø	Code	A	B	C	D	E	F	G	H	kg
080	LS601716080	80	140	196						0.4
100	LS601716100	100	160	216						0.5
115	LS601716115	115	190	246						0.6
120	LS601716120	120	190	246						0.6
130	LS601716130	130	190	246						0.6
140	LS601716140	140	210	266						0.6
150	LS601716150	150	210	266						0.7
160	LS601716160	160	230	286						0.8
180	LS601716180	180	240	296						0.9
200	LS601716200	200	260	316						1
225	LS601716225	225	310	366						1.4
250	LS601716250	250	310	366						1.4
300	LS601716300	300	360	406						1.6

FU72

obruč protiv padalina



Ø	Code	A	B	C	D	E	F	G	H	kg
080	FU72080	80		15						0.17
100	FU72100	100		15						0.19
115	FU72115	115		15						0.2
120	FU72120	120		15						0.21
130	FU72130	130		15						0.22
140	FU72140	140		15						0.23
150	FU72150	150		15						0.24
160	FU72160	160		25						0.25
180	FU72180	180		25						0.28
200	FU72200	200		25						0.29
225	FU72225	225		25						0.32
250	FU72250	250		25						0.34
300	FU72300	300		25						0.39



Sistem FURADO – A

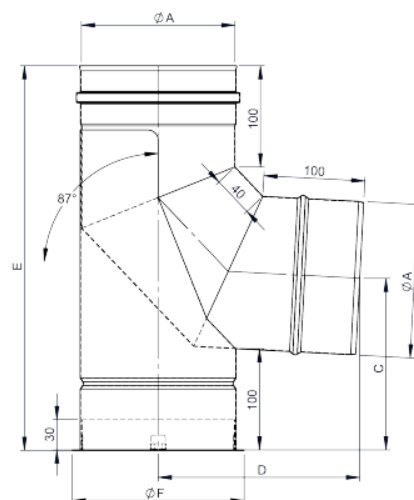
KOMPONENTE EW-AL-BI

ALBI06...06

potporno koljeno 87°



Ø	Code	A	B	C	D	E	F	G	H	kg
080	ALBI06D06080	80		134	166	309	100			0.7
100	ALBI06D06100	100		144	175	329	120			0.92
115	ALBI06D06115	115		152	182	344	135			1.09
120	ALBI06D06120	120		154	185	349	140			1.15
130	ALBI06D06130	130		159	190	359	150			1.28
140	ALBI06D06140	140		164	194	369	160			1.41
150	ALBI06D06150	150		170	199	380	170			1.56
160	ALBI06D06160	160		174	204	389	180			1.69
180	ALBI06D06180	180		184	213	410	200			2
200	ALBI06D06200	200		194	223	430	220			2.31
225	ALBI06D06225	225		207	235	455	245			2.74
250	ALBI06D06250	250		219	246	480	270			3.2

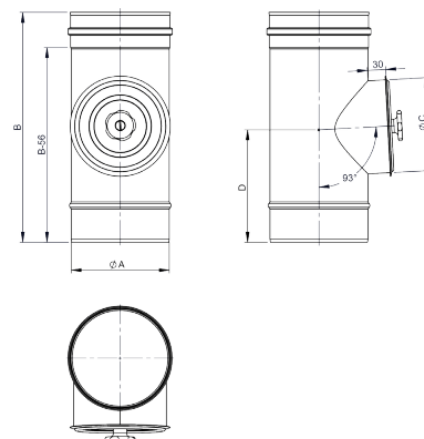


ALBI06...30

element sa revizijom, okrugli (do 200°C/P1)

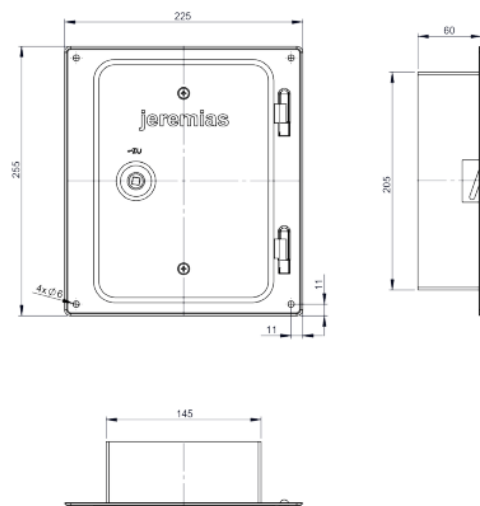


Ø	Code	A	B	C	D	E	F	G	H	kg
080	ALBI06D30080	80	376	80	185					0.83
100	ALBI06D30100	100	376	100	186					1.03
115	ALBI06D30115	115	376	115	186					1.19
120	ALBI06D30120	120	376	120	186					1.24
130	ALBI06D30130	130	376	130	187					1.35
140	ALBI06D30140	140	376	140	187					1.46
150	ALBI06D30150	150	376	150	187					1.58
160	ALBI06D30160	160	376	150	187					1.65
180	ALBI06D30180	180	376	150	188					1.81
200	ALBI06D30200	200	376	150	188					1.95
225	ALBI06D30225	225	406	180	197					2.4
250	ALBI06D30250	250	406	180	198					2.6



FU0960

inox vratašca 210x140 mm, sa kliznim nastavkom
150 mm ravno, inkl. ključ, pogodno za FU07K

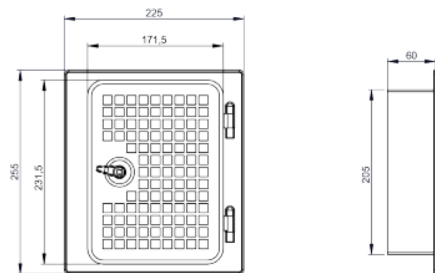




Sistem FURADO – A

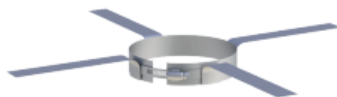
FU5160

inox vratašca 210x140 mm sa ventilacijom i
kliznim nastavkom 60 mm

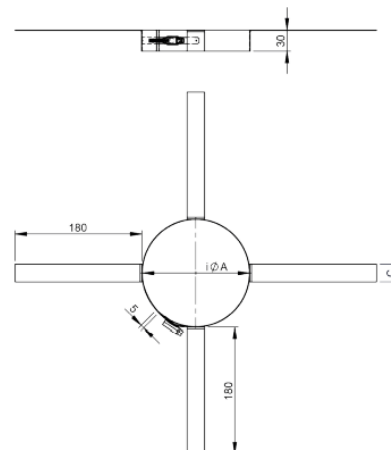


FU40

odstojnik

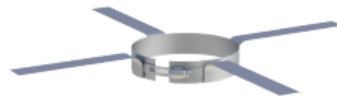


Ø	Code	A	B	C	D	E	F	G	H	kg
	FU40115	115		25						0.17
	FU40140	140		25						0.18
	FU40160	160		30						0.21

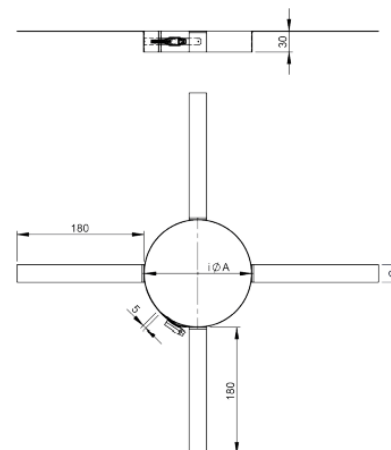


FU40

odstojnik



za Ø	Code	A	B	C	D	E	F	G	H	kg
080	FU40080	80		20						0.14
100	FU40100	100		20						0.14
120	FU40120	120		25						0.17
130	FU40130	130		25						0.18
150	FU40150	150		25						0.19
180	FU40180	180		30						0.22
200	FU40200	200		30						0.3
225	FU40225	225		30						0.31
250	FU40250	250		30						0.33





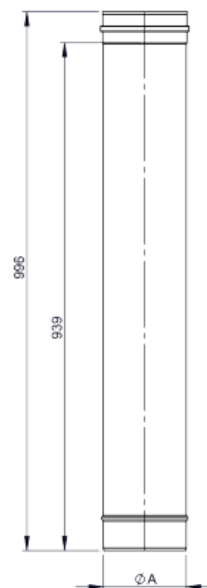
Sistem FURADO – A

ALBI06...02

cijev 1000 mm



Ø	Code	A	B	C	D	E	F	G	H	kg
080	ALBI06D02080	80								1.22
100	ALBI06D02100	100								1.53
115	ALBI06D02115	115								1.75
120	ALBI06D02120	120								1.83
130	ALBI06D02130	130								1.98
140	ALBI06D02140	140								2.13
150	ALBI06D02150	150								2.3
160	ALBI06D02160	160								2.44
180	ALBI06D02180	180								2.74
200	ALBI06D02200	200								3.04
225	ALBI06D02225	200								3.04
250	ALBI06D02250	250								3.8

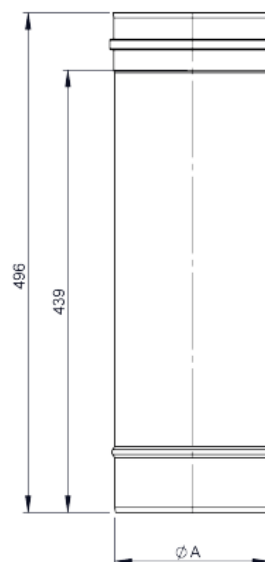


ALBI06...03

cijev 500 mm



Ø	Code	A	B	C	D	E	F	G	H	kg
080	ALBI06D03080	80								0.31
100	ALBI06D03100	100								0.39
115	ALBI06D03115	115								0.45
120	ALBI06D03120	120								0.47
130	ALBI06D03130	130								0.51
140	ALBI06D03140	140								1.07
150	ALBI06D03150	150								0.59
160	ALBI06D03160	160								0.62
180	ALBI06D03180	180								0.7
200	ALBI06D03200	200								0.78
225	ALBI06D03225	225								0.87
250	ALBI06D03250	250								0.97

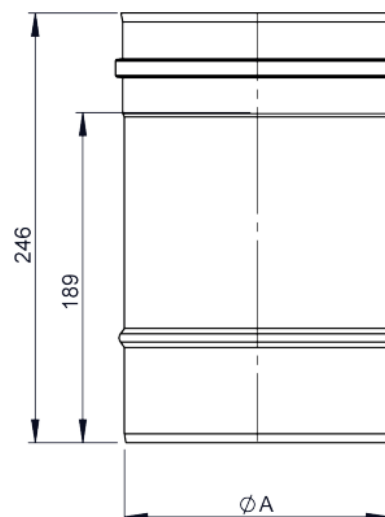


ALBI06...04

cijev 250 mm



Ø	Code	A	B	C	D	E	F	G	H	kg
080	ALBI06D04080	80								0.31
100	ALBI06D04100	100								0.39
115	ALBI06D04115	115								0.45
120	ALBI06D04120	120								0.47
130	ALBI06D04130	130								0.51
140	ALBI06D04140	140								0.54
150	ALBI06D04150	150								0.59
160	ALBI06D04160	160								0.62
180	ALBI06D04180	180								0.7
200	ALBI06D04200	200								0.78
225	ALBI06D04225	225								0.87
250	ALBI06D04250	250								0.97





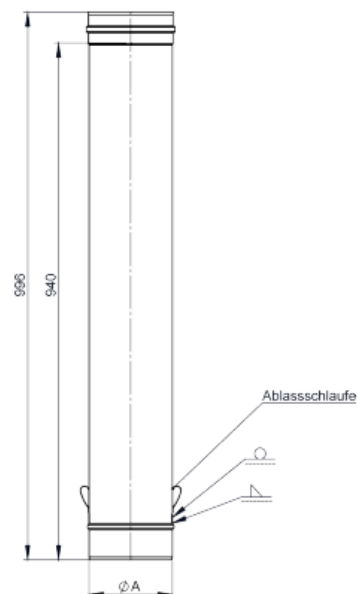
Sistem FURADO – A

ALBI06...05

cijev 1000 mm sa 2 petlje za upuštanje



Ø	Code	A	B	C	D	E	F	G	H	kg
080	ALBI06D05080	80								1.24
100	ALBI06D05100	100								1.54
115	ALBI06D05115	115								1.76
120	ALBI06D05120	120								1.84
130	ALBI06D05130	130								1.99
140	ALBI06D05140	140								2.14
150	ALBI06D05150	150								2.31
160	ALBI06D05160	160								2.44
180	ALBI06D05180	180								2.76
200	ALBI06D05200	200								3.05
225	ALBI06D05225	225								3.05
250	ALBI06D05250	250								3.81

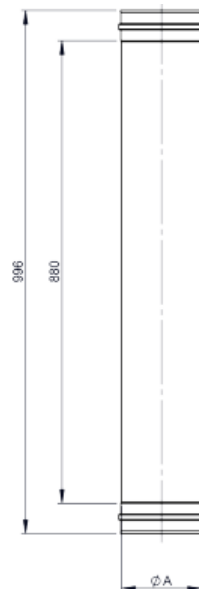


ALBI06...2438

cijev 1000 mm sa duplom spojnicom



Ø	Code	A	B	C	D	E	F	G	H	kg
080	ALBI06D2438080	80								1.22
100	ALBI06D2438100	100								1.52
115	ALBI06D2438115	115								1.75
120	ALBI06D2438120	120								1.83
130	ALBI06D2438130	130								1.98
140	ALBI06D2438140	140								2.13
150	ALBI06D2438150	150								2.3
160	ALBI06D2438160	160								2.43
180	ALBI06D2438180	180								2.74
200	ALBI06D2438200	200								3.04
225	ALBI06D2438225	225								3.42
250	ALBI06D2438250	250								3.8

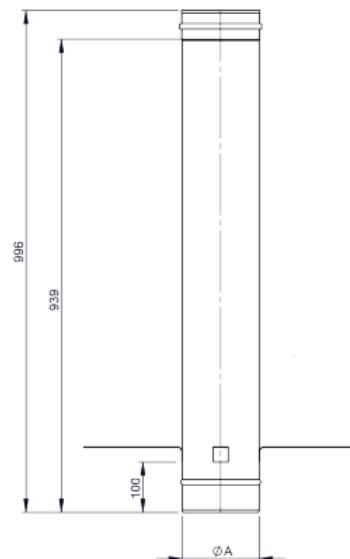


ALBI06...70

cijev 1000 mm sa spojnicom za montažu



Ø	Code	A	B	C	D	E	F	G	H	kg
080	ALBI06D70080	80								1.4
100	ALBI06D70100	100								1.7
115	ALBI06D70115	115								1.9
120	ALBI06D70120	120								2
130	ALBI06D70130	130								2.2
140	ALBI06D70140	140								2.3
150	ALBI06D70150	150								2.5
160	ALBI06D70160	160								2.6
180	ALBI06D70180	180								2.9
200	ALBI06D70200	200								3.2
225	ALBI06D70225	225								3.2
250	ALBI06D70250	250								4





Sistem FURADO – A

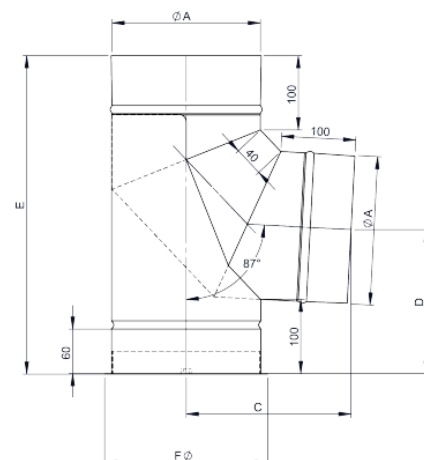
KOMPONENTE EW-KL

KL0606

koljeno 87° sa potpornom stopom



Ø	Code	A	B	C	D	E	F	G	H	kg
080	KL0606080	80		165	134	309	100			0.7
100	KL0606100	100		175	144	328	120			0.9
120	KL0606120	120		184	154	348	140			1.2
130	KL0606130	130		189	159	358	150			1.2
150	KL0606150	150		199	169	380	170			1.5
180	KL0606180	180		213	184	409	200			1.9
200	KL0606200	200		222	194	428	220			2.2
225	KL0606225	225		234	206	454	245			2.7
250	KL0606250	250		246	219	478	270			3.1

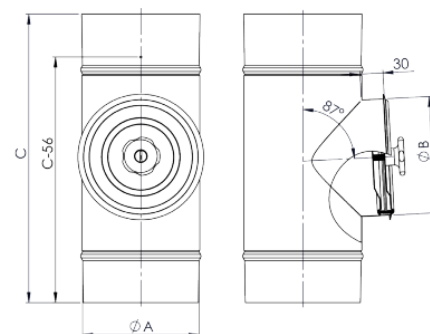


KL0630

element sa revizijom, okrugli (do 200°C/P1)



Ø	Code	A	B	C	D	E	F	G	H	kg
080	KL0630080	80	80	376						0.64
100	KL0630100	100	80	376						0.79
120	KL0630120	120	100	376						0.95
130	KL0630130	130	100	376						1.03
150	KL0630150	150	130	376						1.2
180	KL0630180	180	130	376						1.36
200	KL0630200	200	130	376						1.47
225	KL0630225	225	130	406						1.79
250	KL0630250	250	130	406						1.94

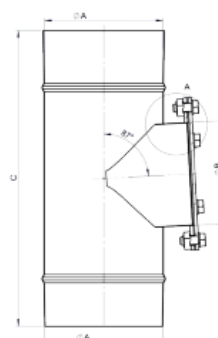
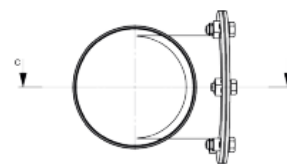


KL0630HTW

element sa revizijom, okrugli, mokri režim rada (do 250°C/H1)



Ø	Code	A	B	C	D	E	F	G	H	kg
080	KL0630HTW080	80	80	376	81.3	120	143.5			
100	KL0630HTW100	100	80	376	81.3	120	143.5			
120	KL0630HTW120	120	100	376	101.3	139	163.5			
130	KL0630HTW130	130	100	376	101.3	139	163.5			
150	KL0630HTW150	150	130	376	131.3	169	193.5			
180	KL0630HTW180	180	130	376	131.3	169	193.5			
200	KL0630HTW200	200	130	376	131.3	169	193.5			
225	KL0630HTW225	225	130	376	131.3	169	193.5			
250	KL0630HTW250	250	130	376	131.3	169	193.5			





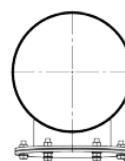
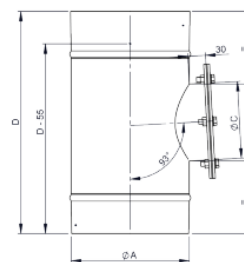
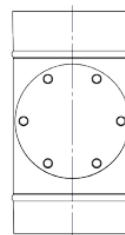
Sistem FURADO – A

KL0630HTD

element sa revizijom, okrugli, suhi režim rada (do 600°C/H1)

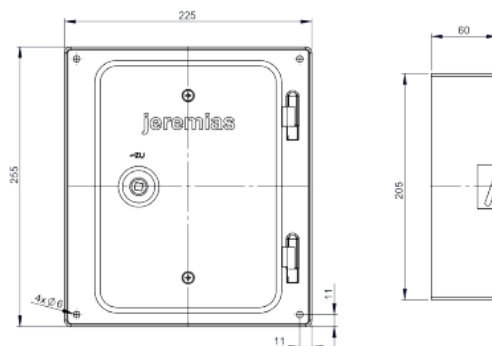


Ø	Code	A	B	C	D	E	F	G	H	kg
080	KL0630HTD080	80	80	376	82	120	143.5			1.26
100	KL0630HTD100	100	80	376	82	120	143.5			1.43
120	KL0630HTD120	120	100	376	102	139	163.5			1.75
130	KL0630HTD130	130	100	376	102	139	163.5			1.82
150	KL0630HTD150	150	130	376	132	169	193.5			2.29
180	KL0630HTD180	180	130	376	132	169	193.5			2.46
200	KL0630HTD200	200	130	376	132	169	193.5			2.57
225	KL0630HTD225	225	130	376	132	169	193.5			2.72
250	KL0630HTD250	250	130	376	132	169	193.5			2.86



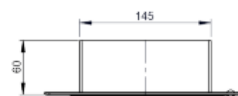
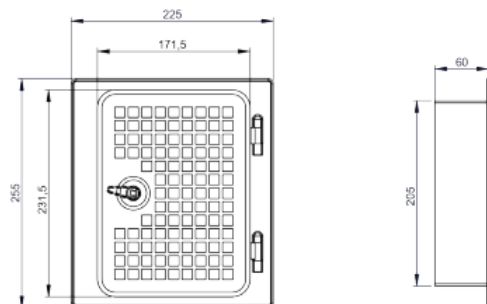
FU0960

inox vratašca 210x140 mm, sa kliznim nastavkom
ravno, inkl. ključ



FU5160

inox vratašca 210x140 mm sa ventilacijom i
kliznim nastavkom 60 mm





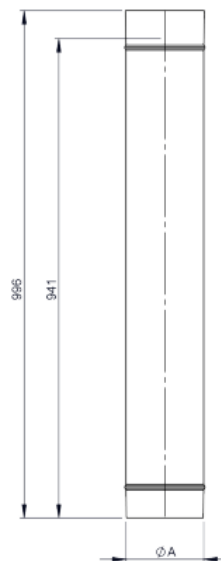
Sistem FURADO – A

KL0602

cijev 1000 mm



Ø	Code	A	B	C	D	E	F	G	H	kg
080	KL0602080	80								1.2
100	KL0602100	100								1.5
120	KL0602120	120								1.8
130	KL0602130	130								1.95
150	KL0602150	150								2.27
180	KL0602180	180								2.71
200	KL0602200	200								3
225	KL0602225	225								3.38
250	KL0602250	250								3.75



KL0603

cijev 500 mm



Ø	Code	A	B	C	D	E	F	G	H	kg
080	KL0603080	80								0.6
100	KL0603100	100								0.75
120	KL0603120	120								0.9
130	KL0603130	130								0.97
150	KL0603150	150								1.13
180	KL0603180	180								1.35
200	KL0603200	200								1.5
225	KL0603225	225								1.69
250	KL0603250	250								1.87

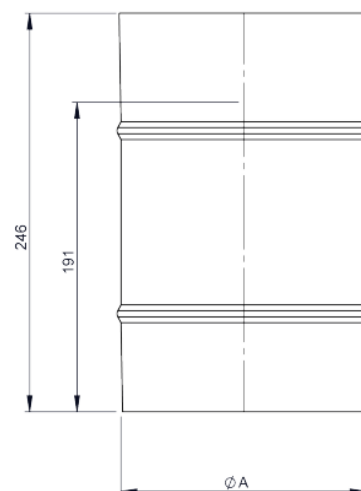


KL0604

cijev 250 mm



Ø	Code	A	B	C	D	E	F	G	H	kg
080	KL0604080	80								0.3
100	KL0604100	100								0.4
120	KL0604120	120								0.4
130	KL0604130	130								0.5
150	KL0604150	150								0.6
180	KL0604180	180								0.7
200	KL0604200	200								0.7
225	KL0604225	225								0.8
250	KL0604250	250								0.9





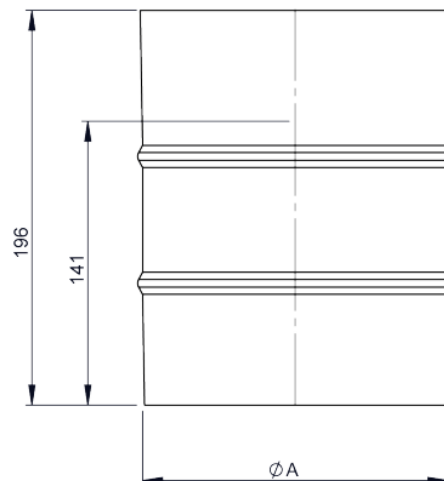
Sistem FURADO – A

KL06223

cijev 200 mm



Ø	Code	A	B	C	D	E	F	G	H	kg
080	KL06223080	80								0.24
100	KL06223100	100								0.3
120	KL06223120	120								0.36
130	KL06223130	130								0.39
150	KL06223150	150								0.45
180	KL06223180	180								0.54
200	KL06223200	200								0.6
225	KL06223225	225								0.67
250	KL06223250	250								0.75

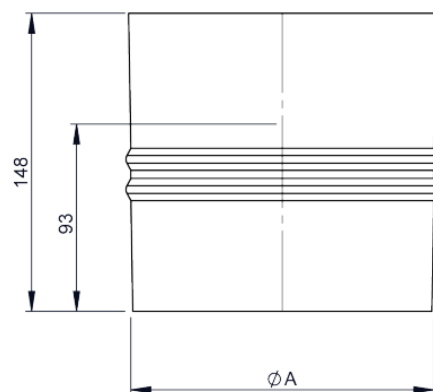


KL06224

cijev 150 mm



Ø	Code	A	B	C	D	E	F	G	H	kg
080	KL06224080	80								0.18
100	KL06224100	100								0.23
120	KL06224120	120								0.27
130	KL06224130	130								0.29
150	KL06224150	150								0.34
180	KL06224180	180								0.41
200	KL06224200	200								0.45
225	KL06224225	225								0.51
250	KL06224250	250								0.57

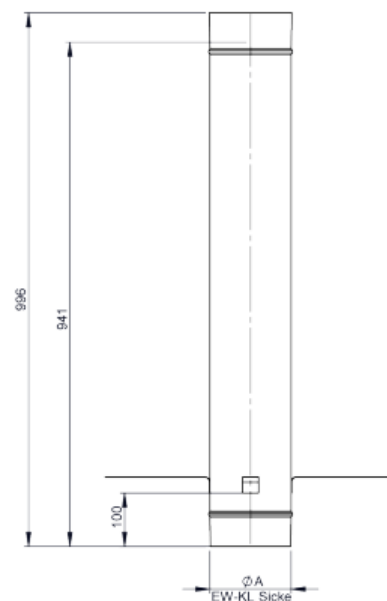


KL0670

cijev 1000 mm sa spojnicom za montažu



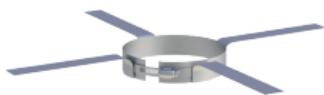
Ø	Code	A	B	C	D	E	F	G	H	kg
080	KL0670080	80								1.37
100	KL0670100	100								1.67
120	KL0670120	120								1.97
130	KL0670130	130								2.12
150	KL0670150	150								2.44
180	KL0670180	180								2.88
200	KL0670200	200								3.17
225	KL0670225	225								3.55
250	KL0670250	250								3.92



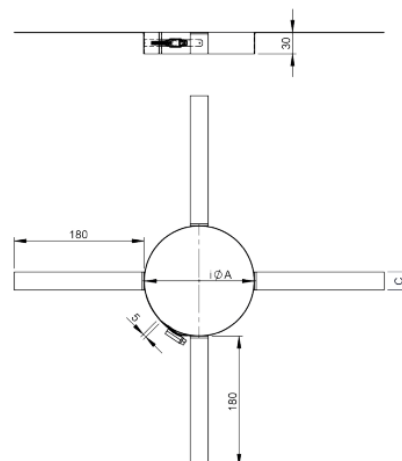


Sistem FURADO – A

FU40
odstojnik



za Ø	Code	A	B	C	D	E	F	G	H	kg
080	FU40080	80		20						0.14
100	FU40100	100		20						0.14
120	FU40120	120		25						0.17
130	FU40130	130		25						0.18
150	FU40150	150		25						0.19
180	FU40180	180		30						0.22
200	FU40200	200		30						0.3
225	FU40225	225		30						0.31
250	FU40250	250		30						0.33





PP1767



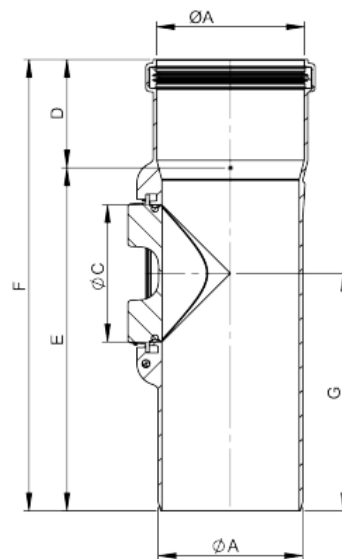
PP1768

PPLS60342

Technical drawing of a mechanical part. The main view is a front view showing a circular cross-section with a diameter of $\phi 8$. The part has a total height of 50.0. The top flange has a thickness of 10.0. The central shaft has a diameter of $\phi 4 \pm 0.4$. The bottom flange has a thickness of 10.0. The part is symmetrical about a vertical centerline. A detailed view of the corner is shown on the right, labeled A (1:2). The detail shows a fillet with a radius of $R 1.0$ and a chamfer with a width of $C 0.5$. The detail also shows the internal structure of the part, including a central hole with a diameter of $\phi 4$ and a central shaft with a diameter of $\phi 4$.

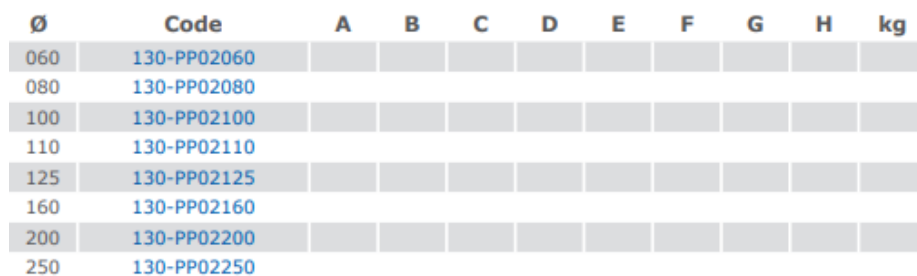


element za kontrolu

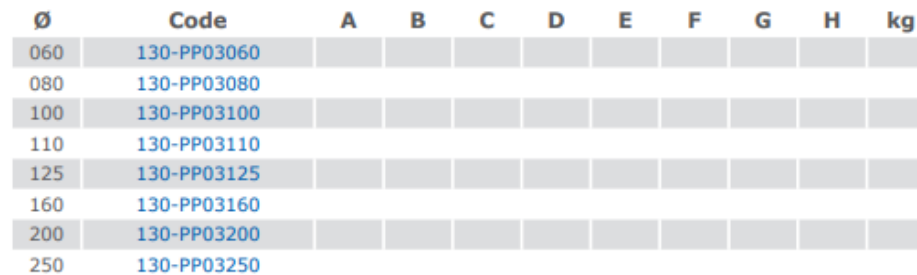


Ø	Code	A	B	C	D	E	F	G	H	kg
060	130-PP30060	060		56	60	147	207	104		
080	130-PP30080	080		76	60	190	250	132		
100	130-PP30100	100		96	60	210	270	142		
110	130-PP30110	110		105	60	230	290	147		
125	130-PP30125	125		105	69	215	284	149		
160	130-PP30160	160		119	99	261	360	190		
200	130-PP30200	200		150	96	366	462	209		
250	130-PP30250	250		191	106	434	540	265		

cijev 1015 mm



cijev 560 mm





Sistem FURADO – A

130-PP04
cijev 315 mm



Ø	Code	A	B	C	D	E	F	G	H	kg
060	130-PP04060									
080	130-PP04080									
100	130-PP04100									
110	130-PP04110									
125	130-PP04125									
160	130-PP04160									
200	130-PP04200									
250	130-PP04250									

PPFLEX02/10
fleksibilna cijev rola 10 m

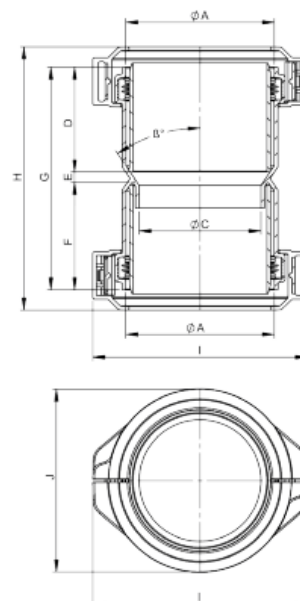


Ø	Code	A	B	C	D	E	F	G	H	kg
060	PPFLEX02060/10									
080	PPFLEX02080/10									
100	PPFLEX02100/10									
110	PPFLEX02110/10									
125	PPFLEX02125/10									
160	PPFLEX02160/10									

PPFLEX07
spojnica flex -flex



Ø	Code	A	B	C	D	E	F	G	H	I	J	K	kg
060	PPFLEX07060	60		47	60	4	58	122	131	93	80		
080	PPFLEX07080	80		67	58	7	58	122	150	118	101		
100	PPFLEX07100	100		86	58	6	58	122	145	138	121		
110	PPFLEX07110	110		96	61	14	61	136	156	153	134		
125	PPFLEX07125	125		102	71	12	71	155	190	172	152		
160	PPFLEX07160	160		138	95	17	95	207	244	207	189		

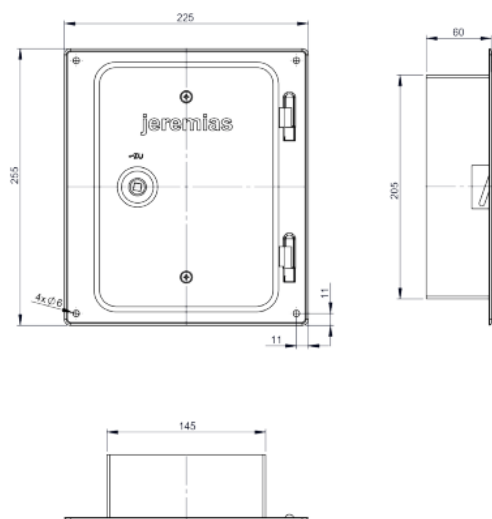




Sistem FURADO – A

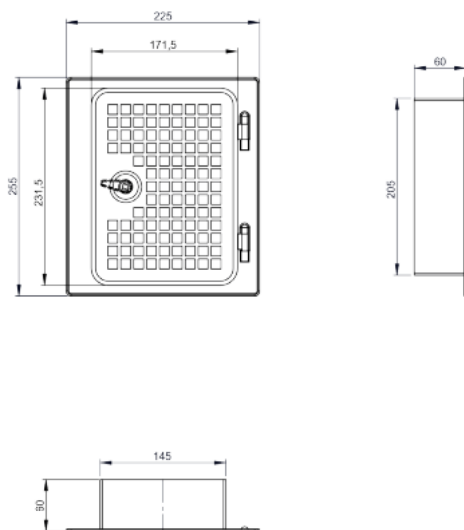
FU0960

inox vratašca 210x140 mm, sa kliznim
nastavkom ravno, inkl. ključ



FU5160

inox vratašca 210x140 mm sa ventilacijom i
kliznim nastavkom 60 mm

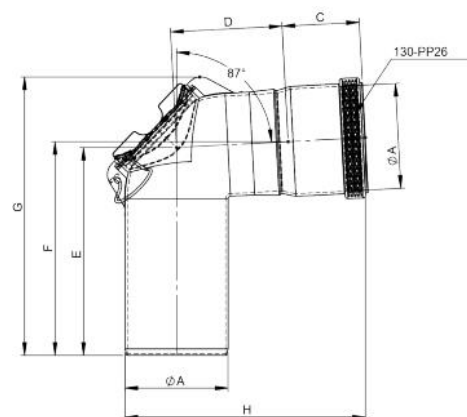


130-PP23

koljeno 87° sa revizijom



Ø	Code	A	B	C	D	E	F	G	H	kg
060	130-PP23060	060		60	36	97	99	139	139	
080	130-PP23080	080		60	87	161	166	216	202	
100	130-PP23100	100		60	97	172	177	237	209	
110	130-PP23110	110		60	78	139	143	211	196	
125	130-PP23125	125		69	69	134	138	215	204	
160	130-PP23160	160		99	84	180	184	280	267	
200	130-PP23200	200		96	188	234	243	357	389	
250	130-PP23250	250		106	134	230	237	392	371	





Sistem FURADO – A

130-PP17

koljeno 15° fiksno



Ø	Code	A	B	C	D	E	F	G	H	kg
060	130-PP17060									
080	130-PP17080									
100	130-PP17100									
110	130-PP17110									
125	130-PP17125									
160	130-PP17160									
200	130-PP17200									
250	130-PP17250									

130-PP18

koljeno 30° fiksno



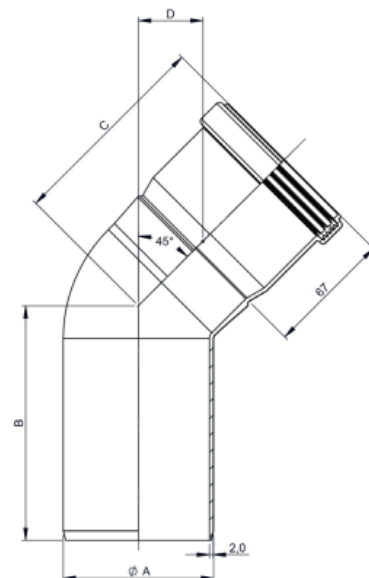
Ø	Code	A	B	C	D	E	F	G	H	I	J	kg
060	130-PP18060	060		60	17	79	94	162	177	47		
080	130-PP18080	080		60	50	125	168	242	323	86		
100	130-PP18100	100		60	26	107	130	208	245	65		
110	130-PP18110	110		60	23	85	105	186	199	53		
125	130-PP18125	125		69	25	90	112	204	212	56		
160	130-PP18160	160		99	28	125	149	277	285	76		
200	130-PP18200	200		96	82	273	344	479	662	177		
250	130-PP18250	250		106	48	144	185	341	355	95		

130-PP19

koljeno 45° fiksno



Ø	Code	A	B	C	D	E	F	G	H	kg
060	130-PP19060	060	85	83	19					
080	130-PP19080	080	125	110	32					
100	130-PP19100	100	125	110	32					
110	130-PP19110	110	113.5	113	30					
125	130-PP19125									
160	130-PP19160									
200	130-PP19200									
250	130-PP19250									





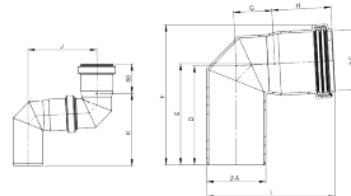
Sistem FURADO – A

130-PP22

koljeno 87° fiksno



Ø	Code	A	B	C	D	E	F	G	H	I	J	K	kg
060	130-PP22060	060		060	101	103	143	39	60	131	138	147	
080	130-PP22080	080		080	162	166	216	87	60	189	244	261	
100	130-PP22100	100		100	172	177	237	96	60	209	264	282	
110	130-PP22110	110		110	139	143	208	79	60	196	216	229	
125	130-PP22125	125		125	134	138	213	69	69	204	199	213	
160	130-PP22160	160		160	180	184	280	84	99	267	263	278	
200	130-PP22200	200		200	230	240	354	189	90	385	420	442	
250	130-PP22250	250		250	230	237	377	134	106	371	362	383	

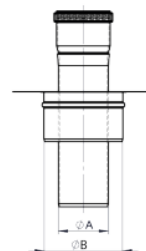
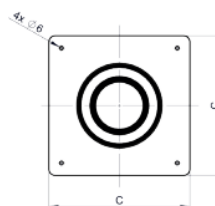


130-PP1760

priključni element za TWIN-PL inkl. 130-PP04



Ø	Code	A	B	C	D	E	F	G	H	kg
060	130-PP1760060	60	100	200						
080	130-PP1760080	80	125	225						
100	130-PP1760100	100	150	250						
110	130-PP1760110	110	160	260						

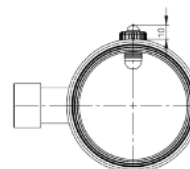
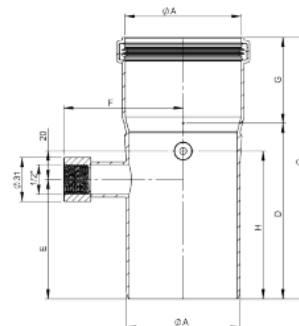


130-PP423A

priključak 250 mm sa 1/2" spojnicom za sigurnosni
temperaturni graničnik



Ø	Code	A	B	C	D	E	F	G	H	kg
060	130-PP423A060	060		255	195	165	90	60	145	
080	130-PP423A080	080		184	124	84	84	60	104	
100	130-PP423A100	100		255	195	155	67	60	135	
110	130-PP423A110	110		255	195	155	72	60	135	
125	130-PP423A125	125		255	185	155	80	70	135	
160	130-PP423A160	160		255	175	145	97	80	125	
200	130-PP423A200	200		255	155	135	117	100	115	
250	130-PP423A250	250		255	155	135	145	100	115	





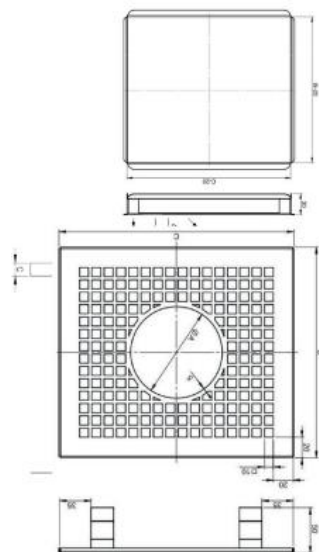
Sistem FURADO – A

130-PP21

rozeta RAL 9016



Ø	Code	A	B	C	D	E	F	G	H	kg
060	130-PP21060	62	230	258						
080	130-PP21080	82	230	258						
100	130-PP21100	102	230	258						
110	130-PP21110	112	230	258						
125	130-PP21125	127	230	258						
160	130-PP21160	162	230	258						
200	130-PP21200	202	310	336						
250	130-PP21250	252	360	386						



PP72

obruč protiv padalina sa sigurnosnim užetom
pogodno za završni set (PLS60342)



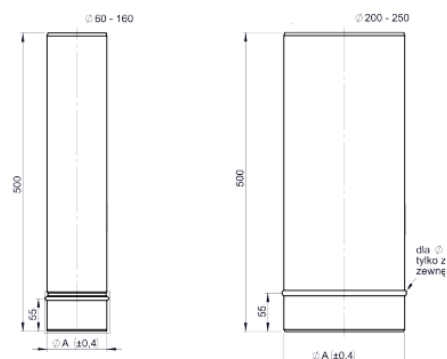
Ø	Code	A	B	C	D	E	F	G	H	kg
060	PP72060									
080	PP72080									
100	PP72100									
110	PP72110									
125	PP72125									
160	PP72160									
200	PP72200									
250	PP72250									

PP126

završna cijev inox, 500 mm za PLS60342



Ø	Code	A	B	C	D	E	F	G	H	kg
060	PP126060	60	56							
080	PP126080	80	77							
100	PP126100	100	97							
110	PP126110	110	106							
125	PP126125	125	121							
160	PP126160	160	156							
200	PP126200	200	-							
250	PP126250	250	-							





Sistem FURADO – A

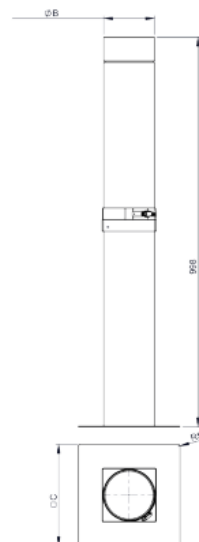
KOMPONENTE NEOVISNE O ZRAKU PROSTORIJE iznad krova

DWA25LS6091

sidrena ploča 1000 mm sa prijelazom na DWA25



Ø izvana	Ø iznutra	Code	A	B	C	D	E	F	kg
260x260	140x140	DWA25LS6091130		130	196				2.2
280x280	160x160	DWA25LS6091150		150	216				2.5
310x310	190x190	DWA25LS6091180		180	246				3
330x330	210x210	DWA25LS6091200		200	266				3.4
350x350	230x230	DWA25LS6091210		210	286				3.6
360x360	240x240	DWA25LS6091230		230	296				3.9
380x380	260x260	DWA25LS6091250		250	316				4.4
430x430	310x310	DWA25LS6091300		300	366				5.1

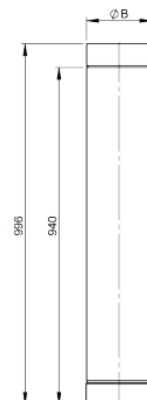


DWA2513

cijev 1000 mm



Ø	Code	A	B	C	D	E	F	G	H	kg
130	DWA2513130									1.6
150	DWA2513150									1.84
180	DWA2513180									2.65
200	DWA2513200									2.46
210	DWA2513210									2.95
230	DWA2513230									3.39
250	DWA2513250									3.69
300	DWA2513300									4.43



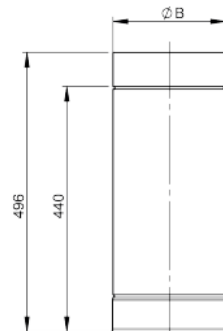
A-A (1:10)

DWA2514

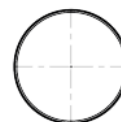
cijev 500 mm



Ø	Code	A	B	C	D	E	F	G	H	kg
130	DWA2514130		130							0.8
150	DWA2514150		150							0.9
180	DWA2514180		180							1.1
200	DWA2514200		200							1.2
210	DWA2514210		210							1.3
230	DWA2514230		230							1.4
250	DWA2514250		250							1.6
300	DWA2514300		300							1.9



A-A

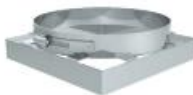




DWA251755
završni komad proširenje do 300 mm



DWA25LS601766
obujmica za učvršćivanje u šahtu

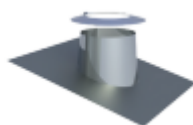
[illegible]



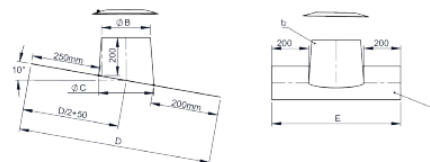
Sistem FURADO – A

DWECO53

krovni opšav 5°-15° sa olovnim rubom i
obručem protiv padalina

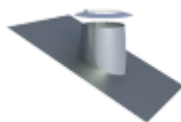


za Ø	Code	A	B	C	D	E	F	G	H	kg
080	DWECO53080									
100	DWECO53100									
115	DWECO53115									
130	DWECO53130		245	280	1000	680				
150	DWECO53150		265	300	1000	700				
160	DWECO53160		275	310	1000	710				
180	DWECO53180		295	330	1000	730				
200	DWECO53200		315	350	1000	750				
250	DWECO53250		365	400	1000	800				

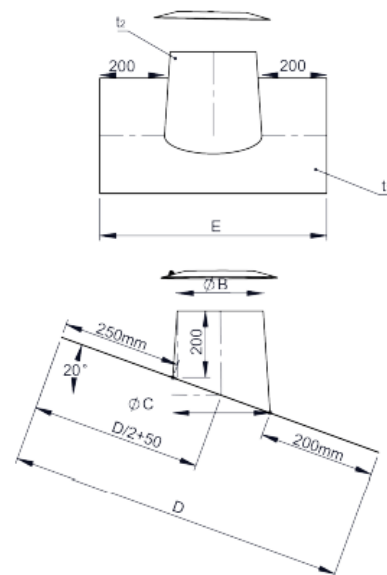


DWECO59

krovni opšav 16°-25° sa olovnim rubom i
obručem protiv padalina

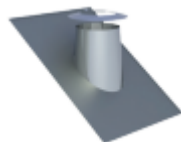


za Ø	Code	A	B	C	D	E	F	G	H	kg
080	DWECO59080									
100	DWECO59100									
115	DWECO59115									
130	DWECO59130		245	280	1000	680				
150	DWECO59150		265	300	1000	700				
160	DWECO59160		275	310	1000	710				
180	DWECO59180		295	330	1000	730				
200	DWECO59200		315	350	1000	750				
250	DWECO59250		365	400	1000	800				

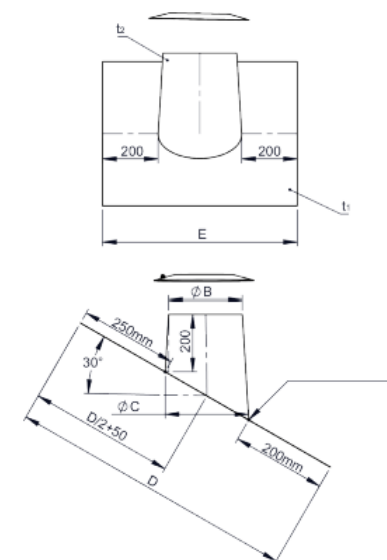


DWECO38

krovni opšav 26°-35° sa olovnim rubom i
obručem protiv padalina



za Ø	Code	A	B	C	D	E	F	G	H	kg
080	DWECO38080		195	230	1000	630				
100	DWECO38100		215	250	1000	650				
115	DWECO38115		230	265	1000	665				
130	DWECO38130		245	280	1000	680				
150	DWECO38150		265	300	1000	700				
160	DWECO38160		275	310	1000	710				
180	DWECO38180		295	330	1000	730				
200	DWECO38200		315	350	1000	750				
250	DWECO38250		365	400	1000	800				

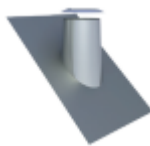




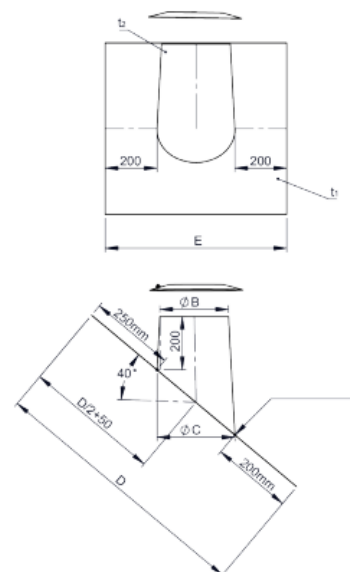
Sistem FURADO – A

DWECO54

krovni opšav 36°-45° sa olovnim rubom i
obručem protiv padalina

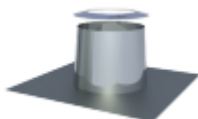


za Ø	Code	A	B	C	D	E	F	G	H	kg
080	DWECO54080		195	230	1000	630				
100	DWECO54100		215	250	1000	650				
115	DWECO54115		230	265	1000	665				
130	DWECO54130		245	280	1000	680				
150	DWECO54150		265	300	1000	700				
160	DWECO54160		275	310	1000	710				
180	DWECO54180		295	330	1000	730				
200	DWECO54200		315	350	1000	750				
250	DWECO54250		365	400	1000	800				

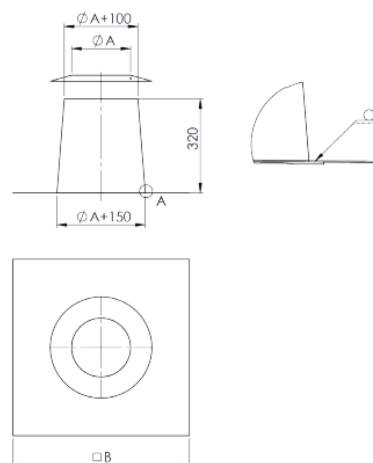


DWECO52

opšav ravni krov konusni + obroč protiv padalina

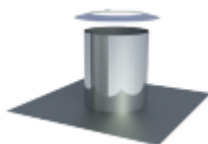


za Ø	Code	A	B	C	D	E	F	G	H	kg
080	DWECO52080	80		195	245	545				
100	DWECO52100	100		215	265	565				
115	DWECO52115	115		230	280	580				
130	DWECO52130	130		245	295	595				
150	DWECO52150	150		265	315	615				
160	DWECO52160	160		275	325	625				
180	DWECO52180	180		295	345	645				
200	DWECO52200	200		315	365	665				
250	DWECO52250	250		365	415	715				



DWECO52ZY

opšav ravni krov cilindrični+obroč protiv padalina



za Ø	Code	A	B	C	D	E	F	G	H	kg
080	DWECO52080ZY	195	595							
100	DWECO52100ZY	215	615							
115	DWECO52115ZY	230	630							
130	DWECO52130ZY	245	645							
150	DWECO52150ZY	265	665							
160	DWECO52160ZY	275	675							
180	DWECO52180ZY	295	695							
200	DWECO52200ZY	315	715							
250	DWECO52250ZY	365	765							



Sistem FURADO – A

DWALS6091

sidrena ploča 1000 mm sa prijelazom na DWA



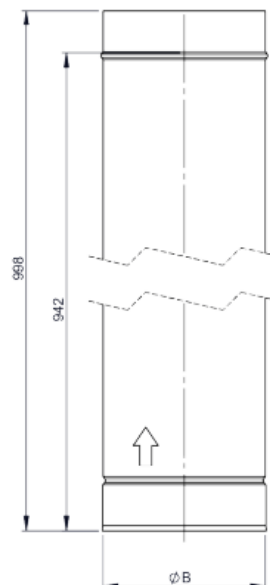
Ø	Code	A	B	C	D	E	F	G	H	kg
145	DWALS6091145									
165	DWALS6091165									
180	DWALS6091180									
195	DWALS6091195									
215	DWALS6091215									
225	DWALS6091225									
245	DWALS6091245									
265	DWALS6091265									
290	DWALS6091290									
315	DWALS6091315									

DWA13

cijev 1000 mm



Ø	Code	A	B	C	D	E	F	G	H	kg
145	DWA13145		145							2.17
165	DWA13165		165							2.47
180	DWA13180		180							2.7
195	DWA13195		195							2.92
215	DWA13215		215							3.22
225	DWA13225		225							3.37
245	DWA13245		245							3.66
265	DWA13265		265							3.96
290	DWA13290		290							4.33
315	DWA13315		315							4.71

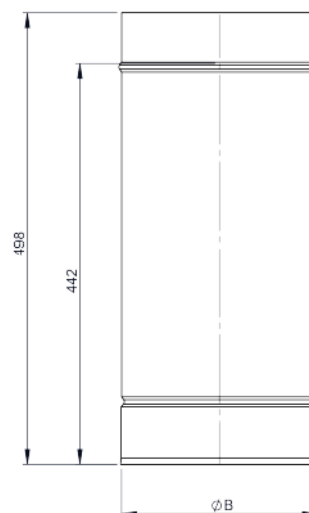


DWA14

cijev 500 mm



Ø	Code	A	B	C	D	E	F	G	H	kg
145	DWA14145									
165	DWA14165									
180	DWA14180									
195	DWA14195									
215	DWA14215									
225	DWA14225									
245	DWA14245									
265	DWA14265									
290	DWA14290									
315	DWA14315									

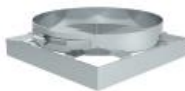




DWA1755
završni komad proširenje do 300 mm



DWALS601766
obujmica za učvršćivanje u šahtu

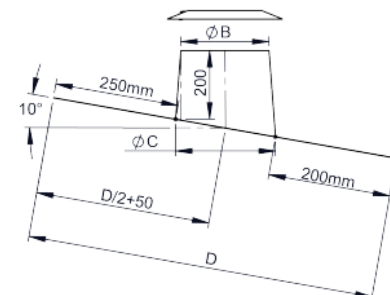
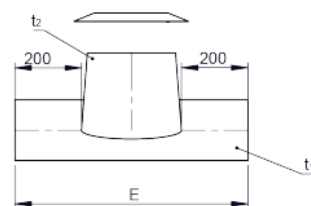
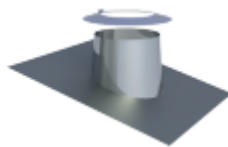
[illegible]



Sistem FURADO – A

DW53

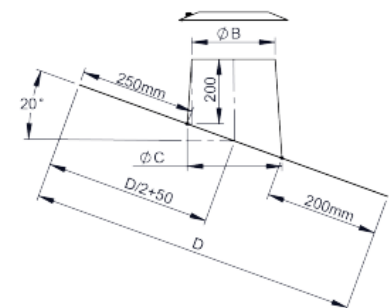
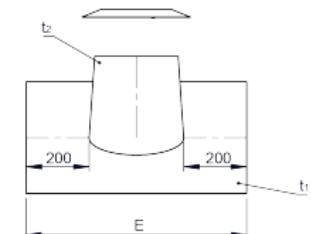
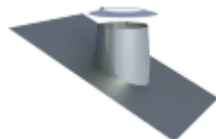
krovni opšav 5°-15° sa olovnim rubom i
obručem protiv padalina



za Ø	Code	A	B	C	D	E	F	G	H	kg
080	DW53080		195	230	1000	630				
100	DW53100		215	250	1000	650				
115	DW53115		230	265	1000	665				
130	DW53130		245	280	1000	680				
150	DW53150		265	300	1000	700				
160	DW53160		275	310	1000	710				
180	DW53180		295	330	1000	730				
200	DW53200		315	350	1000	750				
225	DW53225		340	375	1000	775				
250	DW53250		365	400	1000	800				

DW59

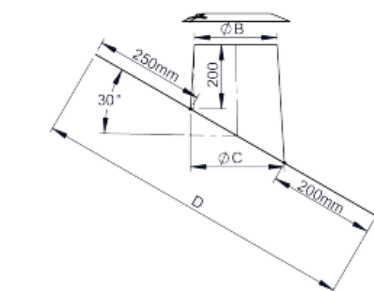
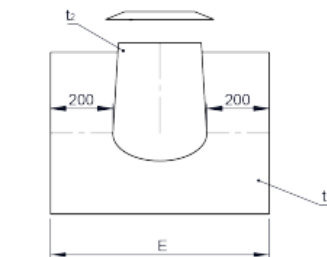
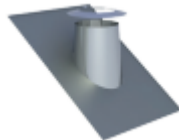
krovni opšav 16°-25° sa olovnim rubom i
obručem protiv padalina



za Ø	Code	A	B	C	D	E	F	G	H	kg
080	DW59080		195	230	1000	630				
100	DW59100		215	250	1000	650				
115	DW59115		230	265	1000	665				
130	DW59130		245	280	1000	680				
150	DW59150		265	300	1000	700				
160	DW59160		275	310	1000	710				
180	DW59180		295	330	1000	730				
200	DW59200		315	350	1000	750				
225	DW59225		340	375	1000	775				
250	DW59250		365	400	1000	800				

DW38

krovni opšav 26°-35° sa olovnim rubom i
obručem protiv padalina



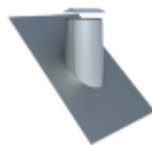
za Ø	Code	A	B	C	D	E	F	G	H	kg
080	DW38080		195	230	1000	630				
100	DW38100		215	250	1000	650				
115	DW38115		230	265	1000	665				
130	DW38130		245	280	1000	680				
150	DW38150		265	300	1000	700				
160	DW38160		275	310	1000	710				
180	DW38180		295	330	1000	730				
200	DW38200		315	350	1000	750				
225	DW38225		340	375	1000	775				
250	DW38250		365	400	1000	800				



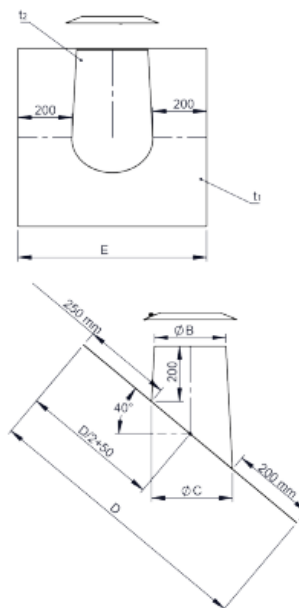
Sistem FURADO – A

DW54

krovni opšav 36°-45° sa olovnim rubom i obručem
protiv padalina

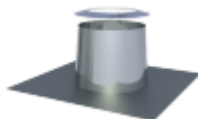


za Ø	Code	A	B	C	D	E	F	G	H	kg
080	DW54080		195	230	1000	630				
100	DW54100		215	250	1000	650				
115	DW54115		230	265	1000	665				
130	DW54130		245	280	1000	680				
150	DW54150		265	300	1000	700				
160	DW54160		275	310	1000	710				
180	DW54180		295	330	1000	730				
200	DW54200		315	350	1000	750				
225	DW54225		340	375	1000	775				
250	DW54250		365	400	1000	800				

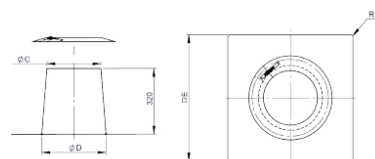


DW52

opšav ravni krov konusni + obruč protiv padalina

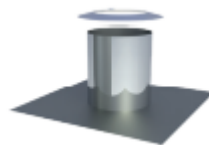


za Ø	Code	A	B	C	D	E	F	G	H	kg
080	DW52080									
100	DW52100									
115	DW52115									
130	DW52130									
150	DW52150									
160	DW52160									
180	DW52180									
200	DW52200									
225	DW52225									
250	DW52250									



DW52ZY

opšav ravni krov cilindrični+obruč protiv padalina



za Ø	Code	A	B	C	D	E	F	G	H	kg
080	DW52080ZY									
100	DW52100ZY									
115	DW52115ZY									
130	DW52130ZY									
150	DW52150ZY									
160	DW52160ZY									
180	DW52180ZY									
200	DW52200ZY									
225	DW52225ZY									
250	DW52250ZY									

