



Sistem FURADO - F

OPIS

Sistem okna sastoji se od kalcij-silikatnih protu-požarnih ploča s unutarnjim cijevima tvrtke Jeremias i izolacijskim oblogama od 25 mm.

Izvedba iznad krova moguća je pomoću sistema DW-ECO 2.0, DW-FU ili šaht sa oblogom.

Alternativno:

Montažno okno za prihvatanje CE-certificiranih unutarnjih cijevi i izolacijskih obloga minimalne debljine 25 mm

MATERIJAL

Kalcij-silikatne protupožarne ploče

DEBLJINA STIJENKE

Standardno: 60 mm (temperatura ispušnih plinova ≤ 600 °C)

Optionalno: 50 mm (temperatura ispušnih plinova ≤ 400 °C)

DIMENZIJE OKNA IZNUTRA

140 x 140 mm do 360 x 360 mm

Ostali na upit



SVOJSTVA

- Vrlo dobra izolacijska svojstva
- Praktičan i jednostavan za sastavljanje zahvaljujući maloj težini
- Tehnologija sigurnog spajanja pero/utor
- Različita rješenja unutarnjih cijevi i obloga zadovoljiti će sve zahtjeve
- Male udaljenosti do zapaljivih komponenti
- 25 m konstrukcijske visine šahta bez međupodupirača
- Statički set za visine montaže iznad krova do 3 m

PODRUČJA PRIMJENE

- Standardna ložišta na kruta goriva (prirodno drvo, koks, treset, ugljen*)
 - Novogradnja i adaptacija
- * osim antracitni ugljen

BROJ ODOBRENJA

Z - 7.1 - 3479 / Z - 7.4 - 3478 /

Z - 7.4 - 3482 / Z - 7.4 - 3483

CE – BROJ CERTIFIKATA

0036 CPR 9174 073

KLASIFIKACIJA PREMA DIN V 18160-1

T400 - N1 - D - 3 - G50 - LA90²³

T600 - N1 - D - 3 - G50 - LA90¹³

(prstenasti razmak min. 20 mm)

KLASIFIKACIJA PREMA DIN EN 1856-1

T400 - N1 - D - V3 - L50050 - Gxx²³

T600 - N1 - D - V3 - L50050 - Gxx¹³

(prstenasti razmak min. 20 mm)

xx= razmaci do zapaljivih komponenti je ovisan o \emptyset , vidi Izjavu o svojstvima
1 60 mm šaht 2 50 mm šaht 3 sa 25 mm izolacije

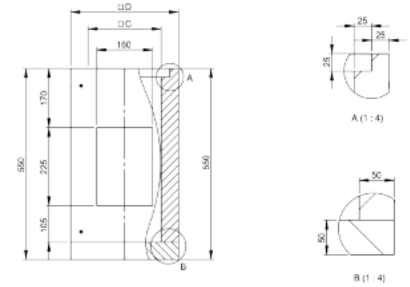


Sistem FURADO - F

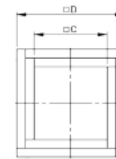
ELEMENTI ŠAHTA

LSX-1250

element podnožja 500 mm za kolektor kondenzata sa otvorom

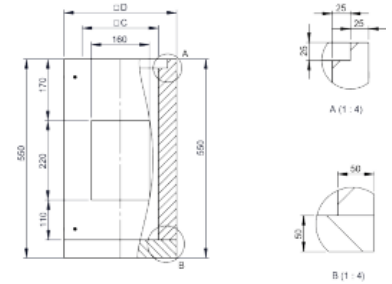
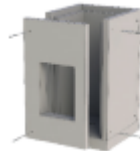


Ø izvana	Ø iznutra	Code	A	B	C	D	E	F	kg
240x240	140x140	LS140X140-1250			140	240			6.1
260x260	160x160	LS160X160-1250			160	260			6.8
290x290	190x190	LS190X190-1250			190	290			7.9
310x310	210x210	LS210X210-1250			210	310			8.7
330x330	230x230	LS230X230-1250			230	330			9.5
340x340	240x240	LS240X240-1250			240	340			9.9
360x360	260x260	LS260X260-1250			260	360			10.7
390x390	290x290	LS290X290-1250			290	390			11.9
410x410	310x310	LS310X310-1250			310	410			12.7
430x430	330x330	LS330X330-1250			330	430			13.5
460x460	360x360	LS360X360-1250			360	460			14.8

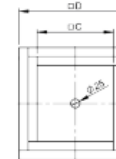


LSX1500

početni element sa izrezom za vrata revizije i otvorom za odvod kondenzata dolje (dodatak LS1250)

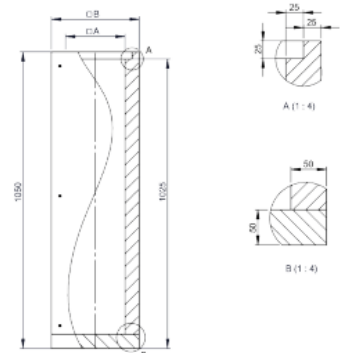


Ø izvana	Ø iznutra	Code	A	B	C	D	E	F	kg
240x240	140x140	LS140X140-1500			140	240			6
260x260	160x160	LS160X160-1500			160	260			6.7
290x290	190x190	LS190X190-1500			190	290			7.9
310x310	210x210	LS210X210-1500			210	310			8.6
330x330	230x230	LS230X230-1500			230	330			9.4
340x340	240x240	LS240X240-1500			240	340			9.8
360x360	260x260	LS260X260-1500			260	360			10.6
390x390	290x290	LS290X290-1500			290	390			11.8
410x410	310x310	LS310X310-1500			310	410			12.6
430x430	330x330	LS330X330-1500			330	430			13.5
460x460	360x360	LS360X360-1500			360	460			14.8



LSX-04

početni element 1000 mm labav/pričvršćen vijkom sa podnom pločom



Ø izvana	Ø iznutra	Code	A	B	C	D	E	F	kg
240x240	140x140	LS140X140-04	140	240					12.3
260x260	160x160	LS160X160-04	160	260					13.6
290x290	190x190	LS190X190-04	190	290					15.7
310x310	210x210	LS210X210-04	210	310					17
330x330	230x230	LS230X230-04	230	330					18.4
340x340	240x240	LS240X240-04	240	340					19.1
360x360	260x260	LS260X260-04	260	360					20.5
390x390	290x290	LS290X290-04	290	390					22.6
410x410	310x310	LS310X310-04	310	410					24
430x430	330x330	LS330X330-04	330	430					25.5
460x460	360x360	LS360X360-04	360	460					27.6

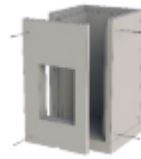




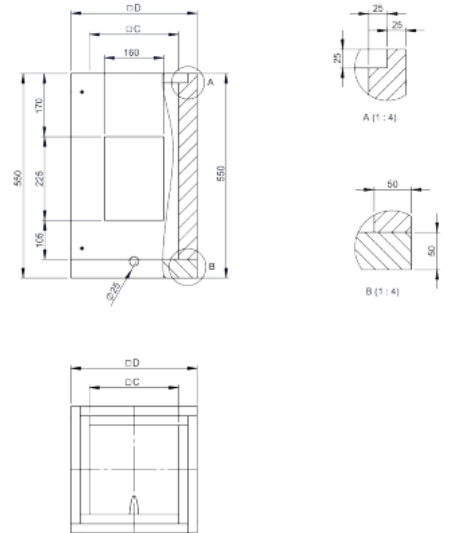
Sistem FURADO - F

LSX-05

početni element 500 mm sa izrezom za vrata
za čišćenje i otvorom za odvod kondenzata
bočno

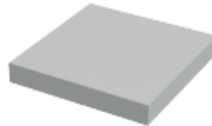


Ø izvana	Ø iznutra	Code	A	B	C	D	E	F	kg
240x240	140x140	LS140X140-05			140	240			6
260x260	160x160	LS160X160-05			160	260			6.7
290x290	190x190	LS190X190-05			190	290			7.8
310x310	210x210	LS210X210-05			210	310			8.6
330x330	230x230	LS230X230-05			230	330			9.4
340x340	240x240	LS240X240-05			240	340			9.8
360x360	260x260	LS260X260-05			260	360			10.6
390x390	290x290	LS290X290-05			290	390			11.8
410x410	310x310	LS310X310-05			310	410			12.6
430x430	330x330	LS330X330-05			330	430			13.4
460x460	360x360	LS360X360-05			360	460			14.7

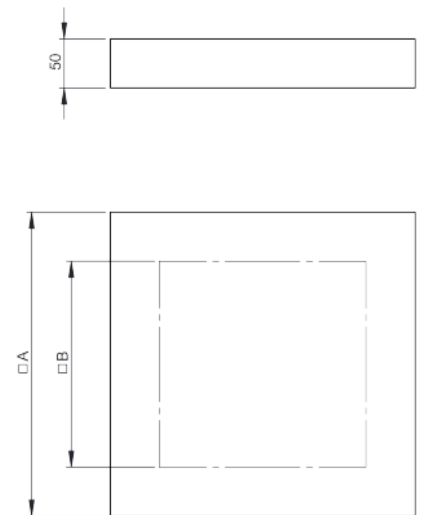


LSX-1658

podna ploča



Ø izvana	Ø iznutra	Code	A	B	C	D	E	F	kg
240x240	140x140	LS140X140-1658	240	140					0.86
260x260	160x160	LS160X160-1658	260	160					1.01
290x290	190x190	LS190X190-1658	290	190					1.26
310x310	210x210	LS210X210-1658	310	210					1.44
330x330	230x230	LS230X230-1658	330	230					1.63
340x340	240x240	LS240X240-1658	340	240					1.73
360x360	260x260	LS260X260-1658	360	260					1.94
390x390	290x290	LS290X290-1658	390	290					2.28
410x410	310x310	LS310X310-1658	410	310					2.52
430x430	330x330	LS330X330-1658	430	330					2.77
460x460	360x360	LS360X360-1658	460	360					2.92

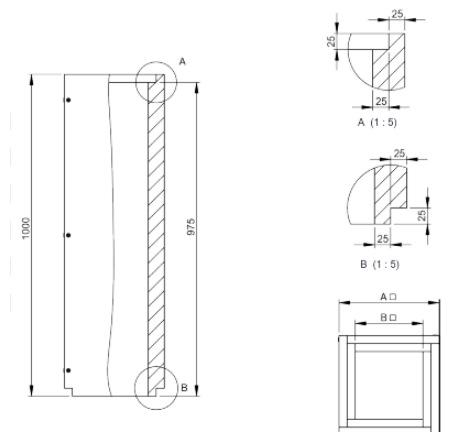


LSX-130

element šahta 1000 mm labav/pričvršćen vijkom



Ø izvana	Ø iznutra	Code	A	B	C	D	E	F	kg
240x240	140x140	LS140X140-130	240	140					11.1
260x260	160x160	LS160X160-130	260	160					12.3
290x290	190x190	LS190X190-130	290	190					14
310x310	210x210	LS210X210-130	310	210					15.2
330x330	230x230	LS230X230-130	330	230					16.4
340x340	240x240	LS240X240-130	340	240					17
360x360	260x260	LS260X260-130	360	260					18.1
390x390	290x290	LS290X290-130	390	290					19.9
410x410	310x310	LS310X310-130	410	310					21.1
430x430	330x330	LS330X330-130	430	330					22.2
460x460	360x360	LS360X360-130	460	360					23.7

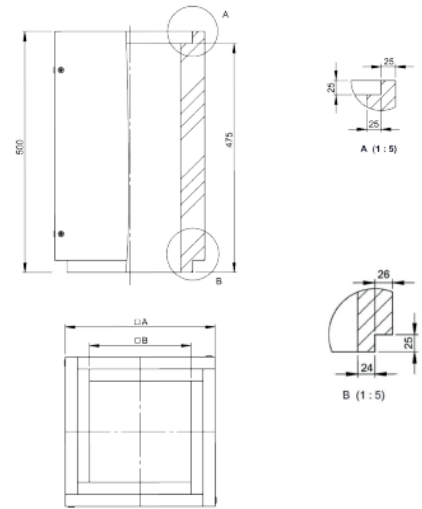




Sistem FURADO - F

LSX-140

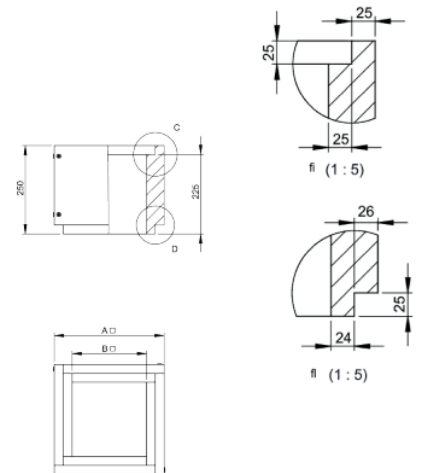
element šahta 500 mm labav/pričvrščen vijkom



Ø izvana	Ø iznutra	Code	A	B	C	D	E	F	kg
240x240	140x140	LS140X140-140	240	140					5.4
260x260	160x160	LS160X160-140	260	160					6
290x290	190x190	LS190X190-140	290	190					6.8
310x310	210x210	LS210X210-140	310	210					7.4
330x330	230x230	LS230X230-140	330	230					8
340x340	240x240	LS240X240-140	340	240					8.3
360x360	260x260	LS260X260-140	360	260					8.8
390x390	290x290	LS290X290-140	390	290					9.7
410x410	310x310	LS310X310-140	410	310					10.3
430x430	330x330	LS330X330-140	430	330					10.8
460x460	360x360	LS360X360-140	460	360					11.6

LSX-150

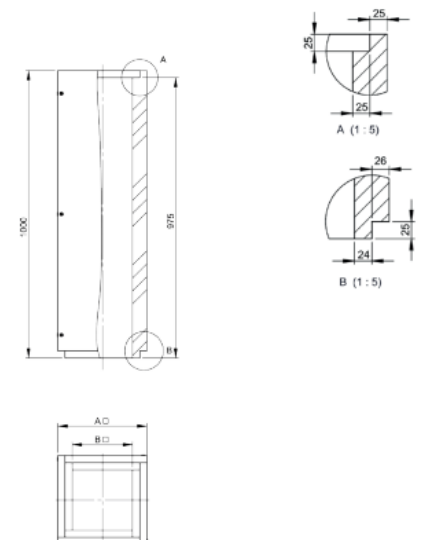
element šahta 250 mm labav/pričvrščen vijkom



Ø izvana	Ø iznutra	Code	A	B	C	D	E	F	kg
240x240	140x140	LS140X140-150	240	140					2.6
260x260	160x160	LS160X160-150	260	160					2.8
290x290	190x190	LS190X190-150	290	190					3.2
310x310	210x210	LS210X210-150	310	210					3.5
330x330	230x230	LS230X230-150	330	230					3.8
340x340	240x240	LS240X240-150	340	240					3.9
360x360	260x260	LS260X260-150	360	260					4.2
390x390	290x290	LS290X290-150	390	290					4.6
410x410	310x310	LS310X310-150	410	310					4.9
430x430	330x330	LS330X330-150	430	330					5.1
460x460	360x360	LS360X360-150	460	360					5.5

LSX-13

element šahta 1000 mm



Ø izvana	Ø iznutra	Code	A	B	C	D	E	F	kg
240x240	140x140	LS140X140-13	240	140					11.1
260x260	160x160	LS160X160-13	260	160					12.3
290x290	190x190	LS190X190-13	290	190					14
310x310	210x210	LS210X210-13	310	210					15.2
330x330	230x230	LS230X230-13	330	230					16.4
340x340	240x240	LS240X240-13	340	240					17
360x360	260x260	LS260X260-13	360	260					18.1
390x390	290x290	LS290X290-13	390	290					19.9
410x410	310x310	LS310X310-13	410	310					21.1
430x430	330x330	LS330X330-13	430	330					22.2
460x460	360x360	LS360X360-13	460	360					23.8



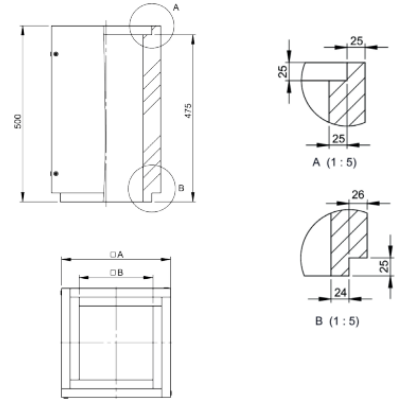
Sistem FURADO - F

LSX-14

element šahta 500 mm



Ø izvana	Ø iznutra	Code	A	B	C	D	E	F	kg
240x240	140x140	LS140X140-14	240	140					5.4
260x260	160x160	LS160X160-14	260	160					6
290x290	190x190	LS190X190-14	290	190					6.8
310x310	210x210	LS210X210-14	310	210					7.4
330x330	230x230	LS230X230-14	330	230					8
340x340	240x240	LS240X240-14	340	240					8.3
360x360	260x260	LS260X260-14	360	260					8.8
390x390	290x290	LS290X290-14	390	290					9.7
410x410	310x310	LS310X310-14	410	310					10.3
430x430	330x330	LS330X330-14	430	330					10.8
460x460	360x360	LS360X360-14	460	360					11.6

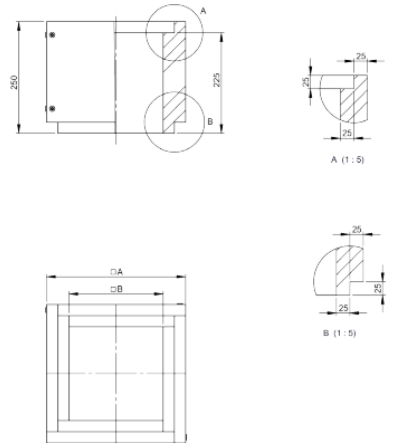


LSX-15

element šahta 250 mm



Ø izvana	Ø iznutra	Code	A	B	C	D	E	F	kg
240x240	140x140	LS140X140-15	240	140					2.6
260x260	160x160	LS160X160-15	260	160					2.8
290x290	190x190	LS190X190-15	290	190					3.2
310x310	210x210	LS210X210-15	310	210					3.5
330x330	230x230	LS230X230-15	330	230					3.8
340x340	240x240	LS240X240-15	340	240					3.9
360x360	260x260	LS260X260-15	360	260					4.2
390x390	290x290	LS290X290-15	390	290					4.6
410x410	310x310	LS310X310-15	410	310					4.9
430x430	330x330	LS330X330-15	430	330					5.1
460x460	360x360	LS360X360-15	460	360					5.5

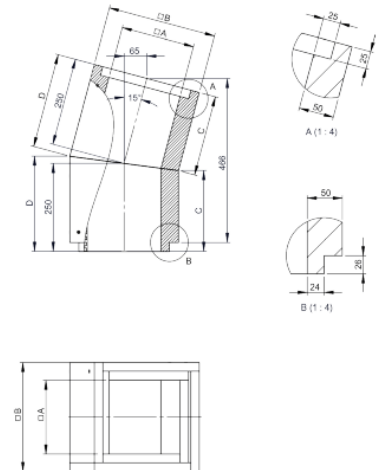


LSX-17

koljeno 15°



Ø izvana	Ø iznutra	Code	A	B	C	D	E	F	kg
240x240	140x140	LS140X140-17	240	140	234	266			5.5
260x260	160x160	LS160X160-17	260	160	233	267			6.1
290x290	190x190	LS190X190-17	290	190	231	269			6.9
310x310	210x210	LS210X210-17	310	210	230	270			7.5
330x330	230x230	LS230X230-17	330	230	228	272			8.1
340x340	240x240	LS240X240-17	340	240	228	272			8.4
360x360	260x260	LS260X260-17	360	260	226	274			5.9
390x390	290x290	LS290X290-17	390	290	224	276			9.8
410x410	310x310	LS310X310-17	410	310	223	277			10.4
430x430	330x330	LS330X330-17	430	330	222	278			10.9
460x460	360x360	LS360X360-17	460	360	220	280			11.8



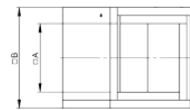
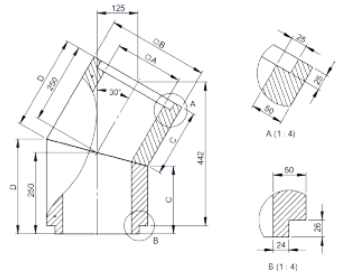


Sistem FURADO - F

LSX-18
koljeno 30°



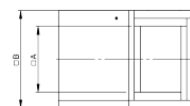
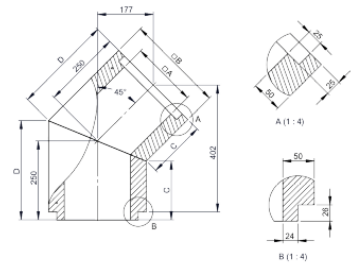
Ø izvana	Ø iznutra	Code	A	B	C	D	E	F	kg
240x240	140x140	LS140X140-18	140	240	218	282			5.5
260x260	160x160	LS160X160-18	160	260	215	285			6.1
290x290	190x190	LS190X190-18	190	290	211	289			6.9
310x310	210x210	LS210X210-18	210	310	208	292			7.5
330x330	230x230	LS230X230-18	230	330	206	294			8.1
340x340	240x240	LS240X240-18	240	340	204	296			8.4
360x360	260x260	LS260X260-18	260	360	202	298			5.9
390x390	290x290	LS290X290-18	290	390	198	302			9.8
410x410	310x310	LS310X310-18	310	410	195	305			10.4
430x430	330x330	LS330X330-18	330	430	192	308			10.9
460x460	360x360	LS360X360-18	360	460	188	312			11.8



LSX-19
koljeno 45°

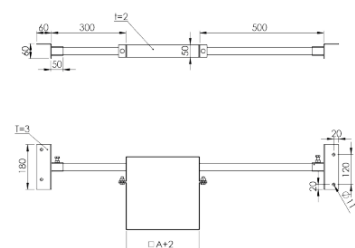


Ø izvana	Ø iznutra	Code	A	B	C	D	E	F	kg
240x240	140x140	LS140X140-19	140	240	200	300			5.5
260x260	160x160	LS160X160-19	160	260	196	304			6.1
290x290	190x190	LS190X190-19	190	290	190	310			6.9
310x310	210x210	LS210X210-19	210	310	186	314			7.5
330x330	230x230	LS230X230-19	230	330	182	318			8.1
340x340	240x240	LS240X240-19	240	340	180	320			8.4
360x360	260x260	LS260X260-19	260	360	175	322			8.9
390x390	290x290	LS290X290-19	290	390	169	325			9.8
410x410	310x310	LS310X310-19	310	410	165	331			10.4
430x430	330x330	LS330X330-19	330	430	161	335			10.9
460x460	360x360	LS360X360-19	360	460	155	339			11.8



LSX-55
krovni držač light, pogodan za šaht

Ø izvana	Ø iznutra	Code	A	B	C	D	E	F	kg
240x240	140x140	LS140X140-55	240						2.8
260x260	160x160	LS160X160-55	260						2.9
290x290	190x190	LS190X190-55	290						3
310x310	210x210	LS210X210-55	310						3
330x330	230x230	LS230X230-55	330						3.1
340x340	240x240	LS240X240-55	340						3.2
360x360	260x260	LS260X260-55	360						3.2
390x390	290x290	LS290X290-55	390						3.3
410x410	310x310	LS310X310-55	410						3.4
430x430	330x330	LS330X330-55	430						3.4
460x460	360x360	LS360X360-55	460						3.5



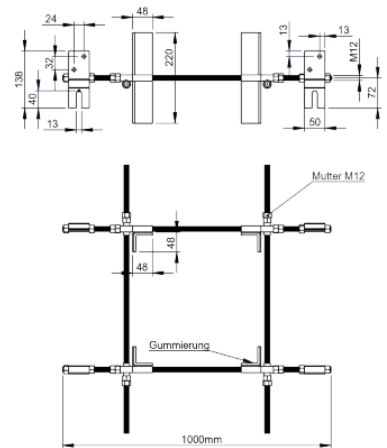


Sistem FURADO - F

LS1518

krovni držač univerzalni za šaht

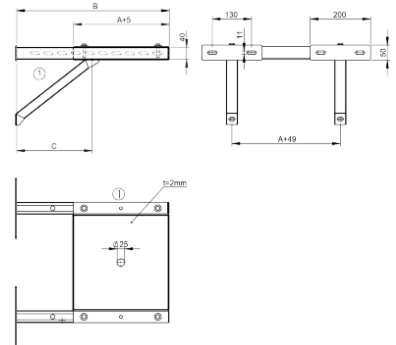
Ø izvana	Ø iznutra	Code	A	B	C	D	E	F	kg
240x240	140x140	LS1518							
260x260	160x160	LS1518							
290x290	190x190	LS1518							
310x310	210x210	LS1518							
330x330	230x230	LS1518							
340x340	240x240	LS1518							
360x360	260x260	LS1518							
390x390	290x290	LS1518							
410x410	310x310	LS1518							
430x430	330x330	LS1518							
460x460	360x360	LS1518							



LSX-132

konzola sa početnom pločom 500 mm

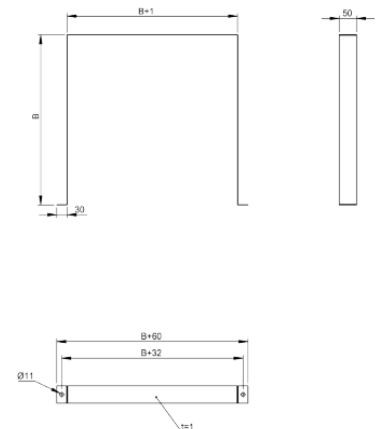
Ø izvana	Ø iznutra	Code	A	B	C	D	E	F	kg
240x240	140x140	LS140X140-132	240						4.2
260x260	160x160	LS160X160-132	260						4.3
290x290	190x190	LS190X190-132	290						4.6
310x310	210x210	LS210X210-132	310						4.8
330x330	230x230	LS230X230-132	330						4.9
340x340	240x240	LS240X240-132	340						5.1
360x360	260x260	LS260X260-132	360						5.2
390x390	290x290	LS290X290-132	390						5.6
410x410	310x310	LS310X310-132	410						5.8
430x430	330x330	LS330X330-132	430						6
460x460	360x360	LS360X360-132	460						6.4



LSX-21

zidni držač za šaht

Ø izvana	Ø iznutra	Code	A	B	C	D	E	F	kg
240x240	140x140	LS140X140-21		240					0.2
260x260	160x160	LS160X160-21		260					0.2
290x290	190x190	LS190X190-21		290					0.3
310x310	210x210	LS210X210-21		310					0.3
330x330	230x230	LS230X230-21		330					0.3
340x340	240x240	LS240X240-21		340					0.3
360x360	260x260	LS260X260-21		360					0.3
390x390	290x290	LS290X290-21		390					0.4
410x410	310x310	LS310X310-21		410					0.4
430x430	330x330	LS330X330-21		430					0.4
460x460	360x360	LS360X360-21		460					0.5



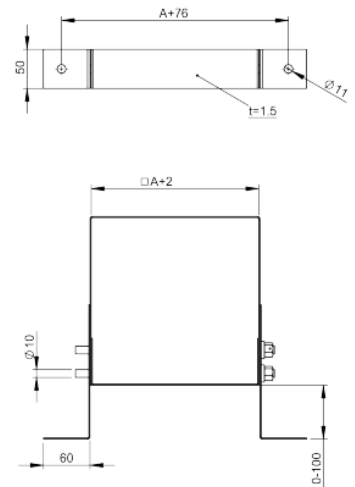


Sistem FURADO - F

LSX-822

zidni držač 0-100 mm za šaht

Ø izvana	Ø iznutra	Code	A	B	C	D	E	F	kg
240x240	140x140	LS140X140-822	240						0.7
260x260	160x160	LS160X160-822	260						0.7
290x290	190x190	LS190X190-822	290						0.8
310x310	210x210	LS210X210-822	310						0.8
330x330	230x230	LS230X230-822	330						0.9
340x340	240x240	LS240X240-822	340						0.9
360x360	260x260	LS260X260-822	360						1
390x390	290x290	LS290X290-822	390						1
410x410	310x310	LS310X310-822	410						1.1
430x430	330x330	LS330X330-822	430						1.1
460x460	360x360	LS360X360-822	460						1.2

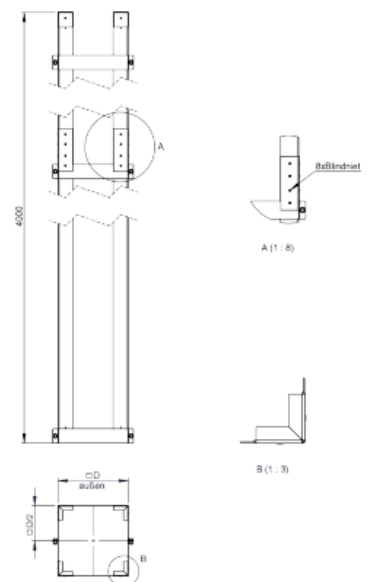


LSX-4-1502

statički komplet za šaht, visine 4 m sa 5 stremena, max. preput 2 m



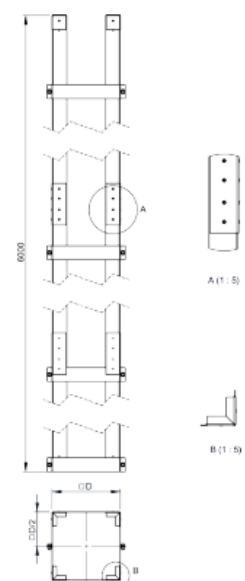
Ø izvana	Ø iznutra	Code	A	B	C	D	E	F	kg
240x240	140x140	LS140X140-4-1502	140		240	246			22.5
260x260	160x160	LS160X160-4-1502	160		260	266			22.65
290x290	190x190	LS190X190-4-1502	190		290	296			22.89
310x310	210x210	LS210X210-4-1502	210		310	316			23.05
330x330	230x230	LS230X230-4-1502	230		330	336			23.21
340x340	240x240	LS240X240-4-1502	240		340	346			23.29
360x360	260x260	LS260X260-4-1502	260		360	366			23.44
390x390	290x290	LS290X290-4-1502	290		390	396			23.68
410x410	310x310	LS310X310-4-1502	310		410	416			23.84
430x430	330x330	LS330X330-4-1502	330		430	436			24
460x460	360x360	LS360X360-4-1502	360		460	466			24.23



LSX-6-1502

statički komplet za šaht, visine 6 m sa 7 stremena, max. preput 3 m

Ø izvana	Ø iznutra	Code	A	B	C	D	E	F	kg
240x240	140x140	LS140X140-6-1502	140		240	246			33.73
260x260	160x160	LS160X160-6-1502	160		260	266			33.95
290x290	190x190	LS190X190-6-1502	190		290	296			34.28
310x310	210x210	LS210X210-6-1502	210		310	316			34.5
330x330	230x230	LS230X230-6-1502	230		330	336			34.72
340x340	240x240	LS240X240-6-1502	240		340	346			34.83
360x360	260x260	LS260X260-6-1502	260		360	366			35.05
390x390	290x290	LS290X290-6-1502	290		390	396			35.39
410x410	310x310	LS310X310-6-1502	310		410	416			35.61
430x430	330x330	LS330X330-6-1502	330		430	436			35.83
460x460	360x360	LS360X360-6-1502	360		460	466			36.16





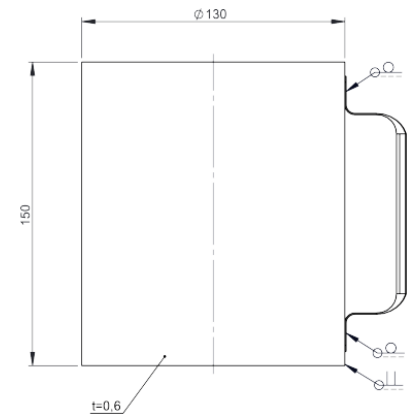
Sistem FURADO - F

ZUTE1255

posuda za kondenzat

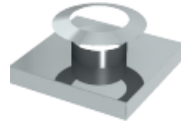


za Ø	Code	A	B	C	D	E	F	G	H	kg
080	ZUTE1255									
100	ZUTE1255									
115	ZUTE1255									
120	ZUTE1255									
130	ZUTE1255									
140	ZUTE1255									
150	ZUTE1255									
160	ZUTE1255									
180	ZUTE1255									
200	ZUTE1255									
225	ZUTE1255									
250	ZUTE1255									
300	ZUTE1255									

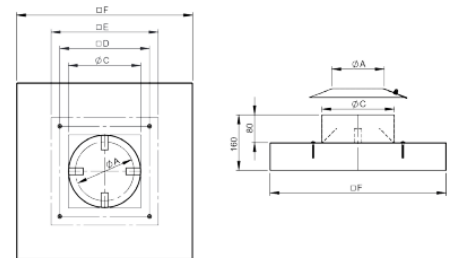


FULS25

krovni opšav sa obručem protiv padalina, obodni
prevjes 100 mm



Ø	Code	A	B	C	D	E	F	G	H	kg
080	FULS25080	140		140	190	240	440			3.1
100	FULS25100	160		160	210	260	460			3.3
115	FULS25115	190		190	240	290	490			3.6
120	FULS25120	190		190	240	290	490			3.6
130	FULS25130	190		190	240	290	490			3.6
140	FULS25140	210		210	260	310	510			3.8
150	FULS25150	210		210	260	310	510			3.8
160	FULS25160	230		230	280	330	530			4
180	FULS25180	240		240	290	340	540			4.2
200	FULS25200	260		260	310	360	560			4.4
225	FULS25225	310		290	360	410	590			4.7
250	FULS25250	310		310	360	410	610			5.3
300	FULS25300	460		360	410	360	660			5.5

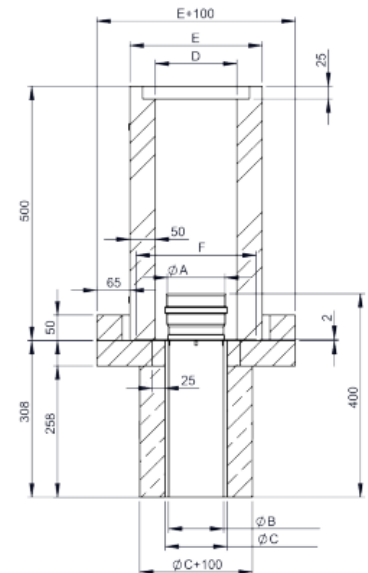


FULS1599

podni element na betonskoj ploči sa duplom
uzidnicom krativo za DW-ECO 2.0 iznad krova



Ø	Code	A	B	C	D	E	F	G	H	kg
080	FULS1599080		73.5	86.5	140	240				
100	FULS1599100		93.5	106.5	160	260				
115	FULS1599115		108.5	121.5	190	290				
120	FULS1599120		113.5	126.5	190	290				
130	FULS1599130		123.5	136.5	190	290				
140	FULS1599140		133.5	146.5	210	310				
150	FULS1599150		143.5	156.5	210	310				
160	FULS1599160									
180	FULS1599180		173.5	186.5	240	340				
200	FULS1599200		193.5	206.5	260	360				
225	FULS1599225		218.5	231.5	310	410				
250	FULS1599250		243.5	256.5	310	410				
300	FULS1599300		293.5	306.5	360	460				





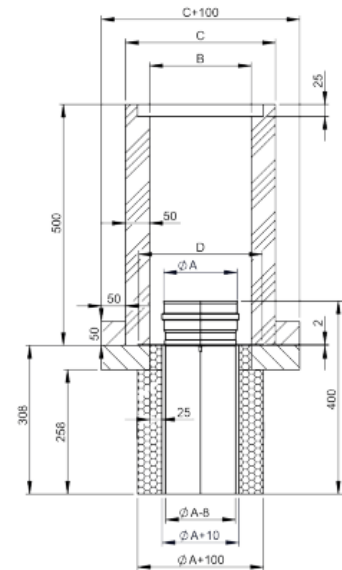
Sistem FURADO - F

FULS1581

podni element na betonskoj ploči sa duplom uzidnicom krativo DW-FU iznad krova



Ø	Code	A	B	C	D	E	F	G	H	kg
080	FULS1581080	80	160	260	206					
100	FULS1581100	100	190	290	236					
115	FULS1581115	115	210	310	256					
120	FULS1581120	120	210	310	256					
130	FULS1581130	130	210	310	276					
140	FULS1581140	140	230	330	276					
150	FULS1581150	150	230	330	276					
160	FULS1581160	160	240	340	286					
180	FULS1581180	180	260	360	306					
200	FULS1581200	200	290	390	336					
225	FULS1581225	225	330	430	376					
250	FULS1581250	250	330	430	376					
300	FULS1581300	300	390	490	436					

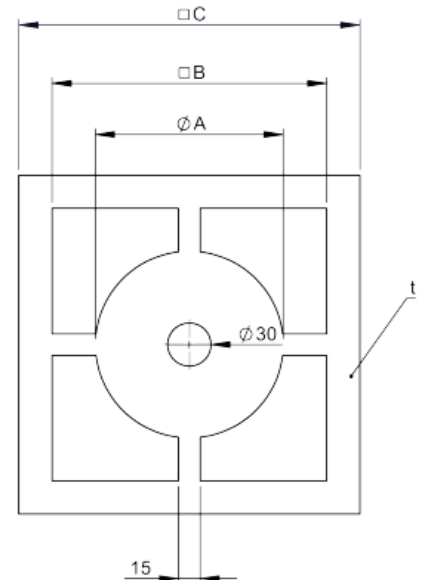


LS1716

postavna ploča za posudu za kondenzat FU94B sa ventilacijom, za šaht ili DW-ECO 2.0 iznad krova



za Ø	Code	A	B	C	D	E	F	G	H	kg
080	LS1716080	80	140	186						0.34
100	LS1716100	100	160	206						0.41
115	LS1716115	115	190	236						0.54
120	LS1716120	120	190	236						0.54
130	LS1716130	130	190	236						0.54
140	LS1716140	140	210	256						0.64
150	LS1716150	150	210	256						0.64
160	LS1716160	160	230	276						0.71
180	LS1716180	180	240	286						0.81
200	LS1716200	200	260	306						0.93
225	LS1716225	225	310	356						1.28
250	LS1716250	250	310	356						1.28
300	LS1716300	300	360	406						1.49

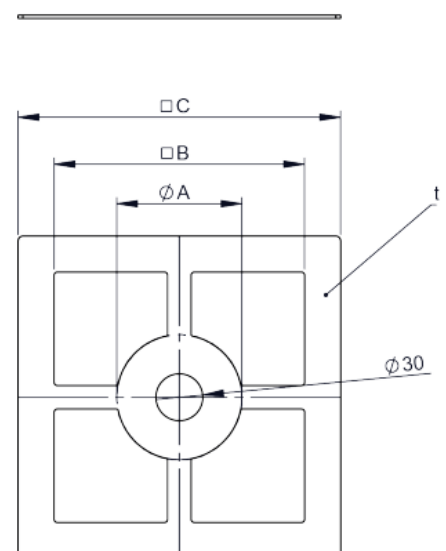


LS1717

postavna ploča za posudu za kondenzat FULS94B sa ventilacijom za šaht ili DW-FU iznad krova



za Ø	Code	A	B	C	D	E	F	G	H	kg
080	LS1717080		160	206						
100	LS1717100		190	236						
115	LS1717115		210	256						
120	LS1717120		210	256						
130	LS1717130		210	256						
140	LS1717140		230	276						
150	LS1717150		230	276						
160	LS1717160		240	286						
180	LS1717180		260	306						
200	LS1717200		290	336						
225	LS1717225		310	356						
250	LS1717250		330	376						
300	LS1717300		390	436						



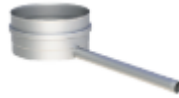


Sistem FURADO - F

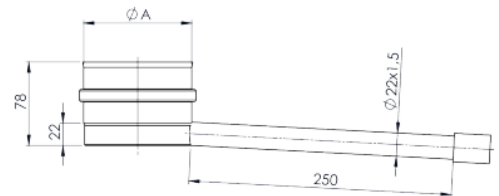
KOMPONENTE EW - FU 0,6 mm

FU01B

posuda za kondenzat sa odvodom 250 mm i
1/2" niplom



za Ø	Code	A	B	C	D	E	F	G	H	kg
080	FU01B080	80								0.5
100	FU01B100	100								0.5
115	FU01B115	115								0.6
120	FU01B120	120								0.6
130	FU01B130	130								0.6
140	FU01B140	140								0.6
150	FU01B150	150								0.6
160	FU01B160	160								0.7
180	FU01B180	180								0.7
200	FU01B200	200								0.8
225	FU01B225	225								0.9
250	FU01B250	250								1
300	FU01B300	300								1.2



FU94B

posuda za kondenzat sa odvodom prema dolje i 1/2"
niplom

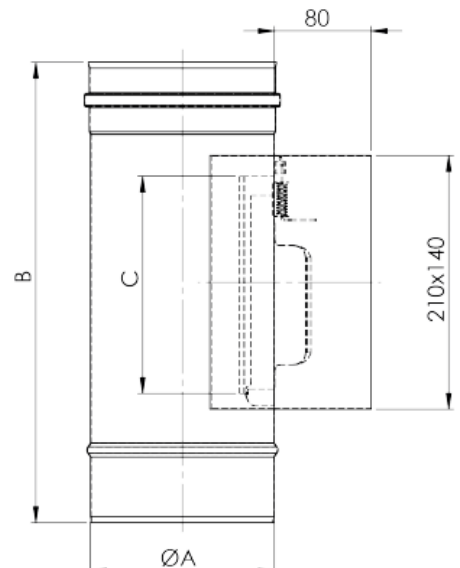


za Ø	Code	A	B	C	D	E	F	G	H	kg
080	FU94B080									
100	FU94B100									
115	FU94B115									
120	FU94B120									
130	FU94B130									
140	FU94B140									
150	FU94B150									
160	FU94B160									
180	FU94B180									
200	FU94B200									
225	FU94B225									
250	FU94B250									
300	FU94B300									

FULS0607K

element sa revizijom FU 210x140 mm, sa kutijom (do
600°C/N1)

Ø	Code	A	B	C	D	E	F	G	H	kg
080	FULS0607K080	80	381		180					0.9
100	FULS0607K100	100	381		180					1
115	FULS0607K115	115	381		180					1.1
120	FULS0607K120	120	381		180					1.2
130	FULS0607K130	130	381		180					1.2
140	FULS0607K140	140	381		180					1.3
150	FULS0607K150	150	381		180					1.4
160	FULS0607K160	160	381		180					1.5
180	FULS0607K180	180	381		180					1.6
200	FULS0607K200	200	381		180					1.7
225	FULS0607K225	225	381		180					1.9
250	FULS0607K250	250	381		180					2
300	FULS0607K300	300	381		180					2.3





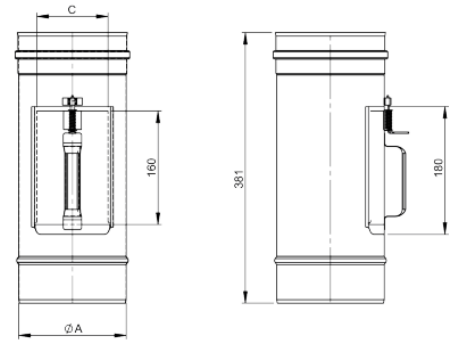
Sistem FURADO - F

FU0607

element sa revizijom sa poklopcem 210x140 mm
(do 600°C/N1)

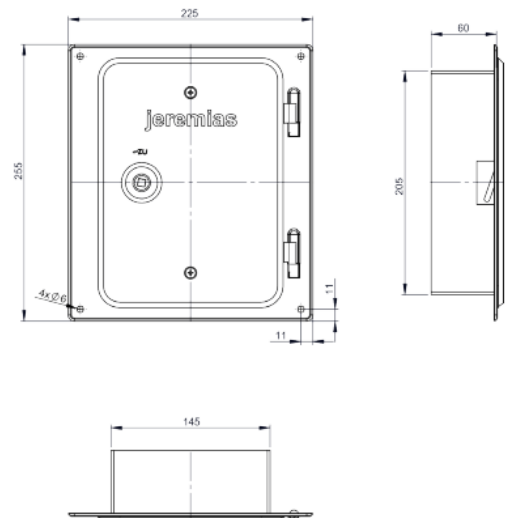


Ø	Code	A	B	C	D	E	F	G	H	kg
080	FU0607080	080		71						0.57
100	FU0607100	100		87						0.69
115	FU0607115	115		97						0.8
120	FU0607120	120		100						0.81
130	FU0607130	130		98						0.87
140	FU0607140	140		100						0.92
150	FU0607150	150		101						0.98
160	FU0607160	160		100						1.04
180	FU0607180	180		101						1.15
200	FU0607200	200		100						1.26
225	FU0607225	225		118						1.45
250	FU0607250	250		115						1.57
300	FU0607300	300		115						1.88



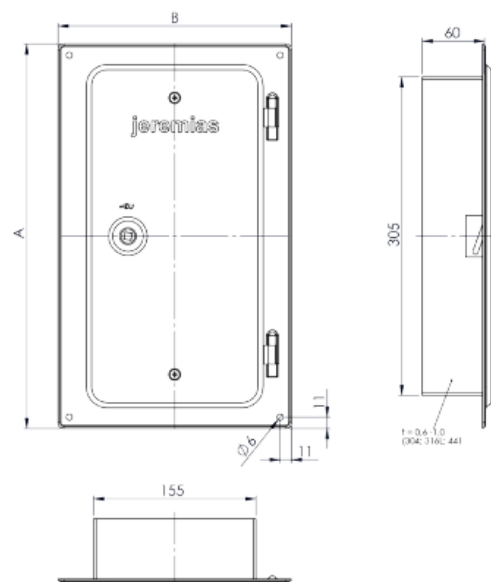
FU0960

inox vratašca 210x140 mm, sa kliznim nastavkom
ravno, ključ



FU1060

inox vratašca 300x150 mm, sa kliznim nastavkom
60 mm koso inkl. ključ

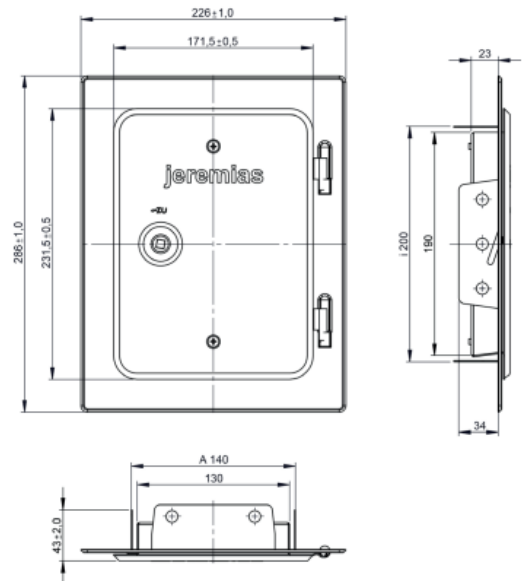




Sistem FURADO - F

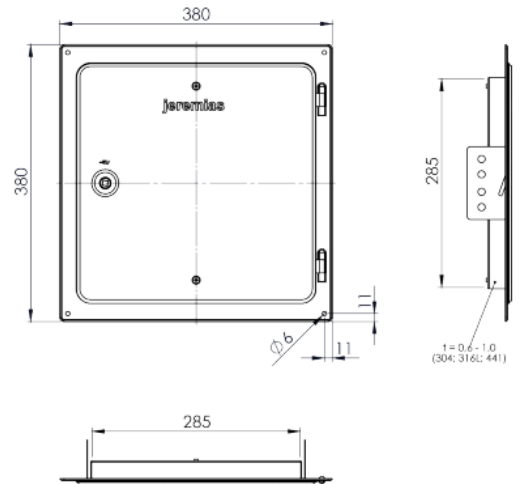
FU13

inox vratašca 210x140 mm



FU14

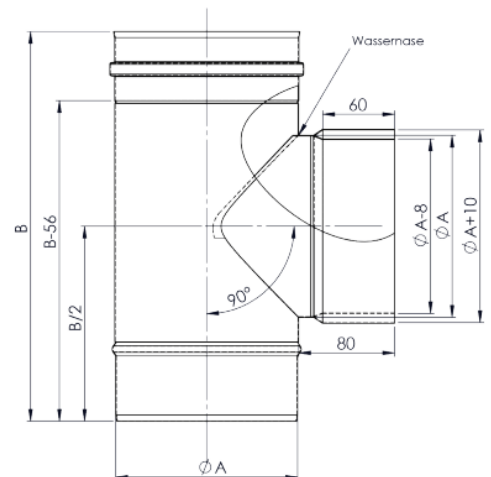
inox vratašca 300x150 mm bez rupa sa 4 spojke i ključem



FULS06317F

T-priključak 90° sa uzidnicom, za FERRO

Ø	Code	A	B	C	D	E	F	G	H	kg
080	FULS06317F080	80	276							0.5
100	FULS06317F100	100	329							0.7
115	FULS06317F115	115	329							0.8
120	FULS06317F120	120	329							0.8
130	FULS06317F130	130	329							0.9
140	FULS06317F140	140	329							1
150	FULS06317F150	150	329							1
160	FULS06317F160	160	376							1.2
180	FULS06317F180	180	376							1.4
200	FULS06317F200	200	376							1.5
225	FULS06317F225	225	446							1.9
250	FULS06317F250	250	446							2.1



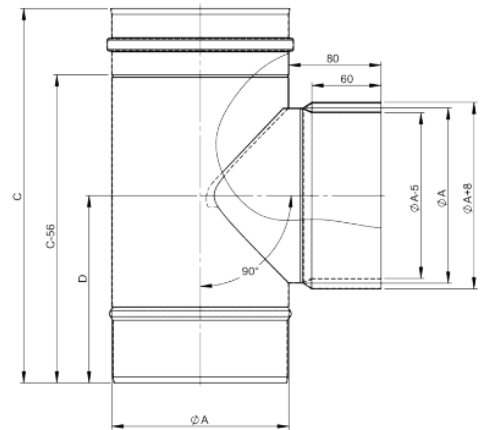


Sistem FURADO - F

FULS06317

T-priključak 90° sa uzidnicom, za FERRO

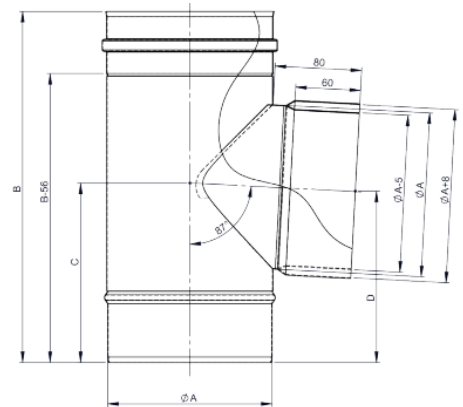
Ø	Code	A	B	C	D	E	F	G	H	kg
080	FULS06317080	80		276	138					0.58
100	FULS06317100	100		329	164.5					0.79
115	FULS06317115	115		329	164.5					0.91
120	FULS06317120	120		329	164.5					0.95
130	FULS06317130	130		329	164.5					1.02
140	FULS06317140	140		329	164.5					1.1
150	FULS06317150	150		329	164.5					1.18
160	FULS06317160	160		376	188					1.36
180	FULS06317180	180		376	188					1.52
200	FULS06317200	200		376	188					1.68
225	FULS06317225	225		446	223					2.12
250	FULS06317250	250		446	223					2.34
300	FULS06317300	300		496	248					3



FULS0615

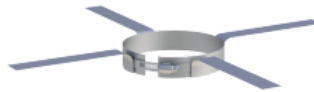
T-priključak 87° sa uzidnicom

Ø	Code	A	B	C	D	E	F	G	H	kg
080	FULS0615080	80	276	138	133					0.5
100	FULS0615100	100	329	165	159					0.8
115	FULS0615115	115	329	166	159					0.9
120	FULS0615120	120	329	166	159					0.9
130	FULS0615130	130	329	166	159					1
140	FULS0615140	140	329	166	159					1
150	FULS0615150	150	329	167	159					1.1
160	FULS0615160	160	376	190	183					1.3
180	FULS0615180	180	376	191	183					1.5
200	FULS0615200	200	376	191	183					1.6
225	FULS0615225	225	446	227	217					2
250	FULS0615250	250	446	228	217					2.3
300	FULS0615300	300	496	254	242					2.9

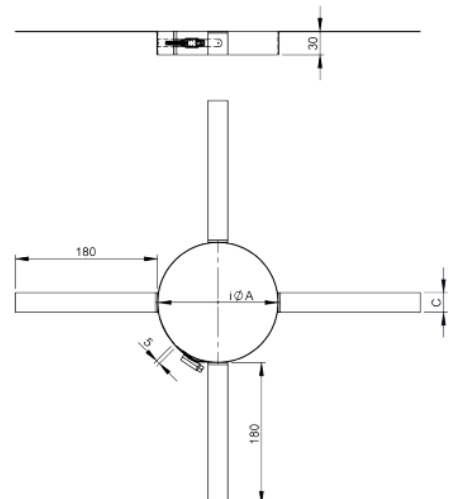


FU40

odstojnik



za Ø	Code	A	B	C	D	E	F	G	H	kg
080	FU40080	80								0.14
100	FU40100	100								0.14
115	FU40115	115								0.17
120	FU40120	120								0.18
130	FU40130	130								0.18
140	FU40140	140								0.18
150	FU40150	150								0.19
160	FU40160	160								0.21
180	FU40180	180								0.22
200	FU40200	200								0.3
225	FU40225	225								0.31
250	FU40250	250								0.33
300	FU40300	300								0.36



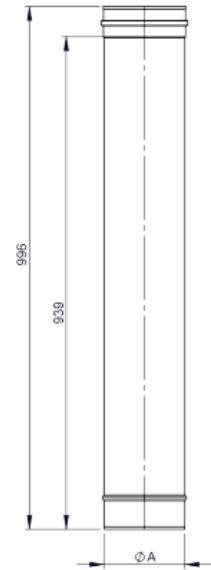


Sistem FURADO - F

FU0602
cijev 1000 mm



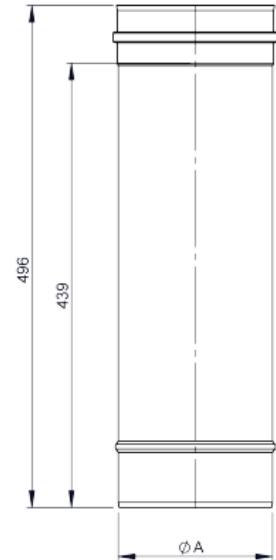
Ø	Code	A	B	C	D	E	F	G	H	kg
080	FU0602080	80								1.22
100	FU0602100	100								1.53
115	FU0602115	115								1.75
120	FU0602120	120								1.83
130	FU0602130	130								1.98
140	FU0602140	140								2.13
150	FU0602150	150								2.3
160	FU0602160	160								2.44
180	FU0602180	180								2.74
200	FU0602200	200								3.04
225	FU0602225	225								3.42
250	FU0602250	250								3.8
300	FU0602300	300								4.56



FU0603
cijev 500 mm



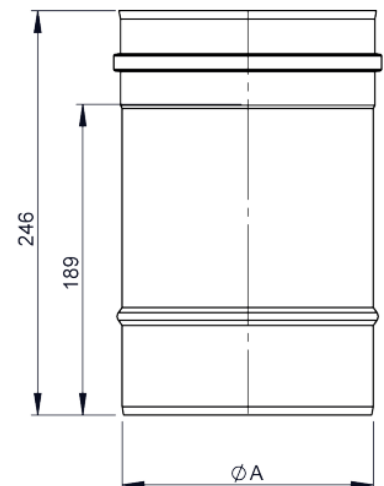
Ø	Code	A	B	C	D	E	F	G	H	kg
080	FU0603080	80								0,62
100	FU0603100	100								0,77
115	FU0603115	115								0,88
120	FU0603120	120								0,92
130	FU0603130	130								1
140	FU0603140	140								1,07
150	FU0603150	150								1,16
160	FU0603160	160								1,23
180	FU0603180	180								1,38
200	FU0603200	200								1,53
225	FU0603225	225								1,72
250	FU0603250	250								1,91
300	FU0603300	300								2,29



FU0604
cijev 250 mm



Ø	Code	A	B	C	D	E	F	G	H	kg
080	FU0604080	80								0,31
100	FU0604100	100								0,39
115	FU0604115	115								0,45
120	FU0604120	120								0,47
130	FU0604130	130								0,51
140	FU0604140	140								0,54
150	FU0604150	150								0,59
160	FU0604160	160								0,62
180	FU0604180	180								0,7
200	FU0604200	200								0,78
225	FU0604225	225								0,87
250	FU0604250	250								0,97
300	FU0604300	300								1,16





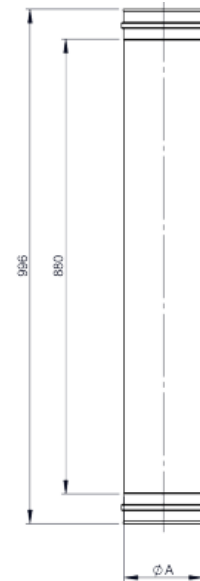
Sistem FURADO - F

FU0606

cijev 1000 mm sa duplom spojnicom



Ø	Code	A	B	C	D	E	F	G	H	kg
080	FU0606080	80								1.22
100	FU0606100	100								1.52
115	FU0606115	115								1.75
120	FU0606120	120								1.83
130	FU0606130	130								1.98
140	FU0606140	140								2.13
150	FU0606150	150								2.3
160	FU0606160	160								2.43
180	FU0606180	180								2.74
200	FU0606200	200								3.04
225	FU0606225	225								3.42
250	FU0606250	250								3.8
300	FU0606300	300								4.56

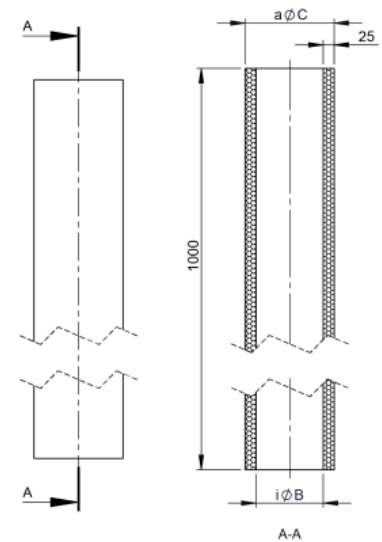


FU39-25

izolacijska obloga debljine 25 mm,
duljine 1000 mm



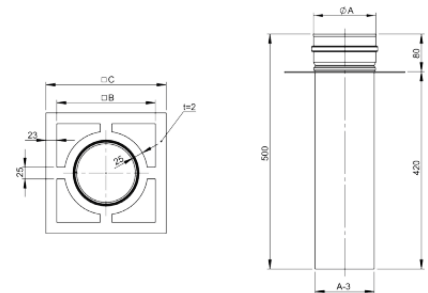
Ø	Code	A	B	C	D	E	F	G	H	kg
080	FU39080-25		83	133						0.84
100	FU39100-25		105	155						1.02
115	FU39115-25		116	166						1.09
120	FU39120-25		123	173						1.16
130	FU39130-25		133	183						1.24
140	FU39140-25		143	193						1.32
150	FU39150-25		153	203						1.4
160	FU39160-25		163	213						1.48
180	FU39180-25		183	233						1.63
200	FU39200-25		205	255						1.8
225	FU39225-25		227	277						1.97
250	FU39250-25		255	305						2.12
300	FU39300-25		305	355						2.04



FULS0634

međupotporanj za kompenzaciju ekspanzije prije pomaka 2.
revizija 2. T-komad

Ø	Code	A	B	C	D	E	F	G	H	kg
080	FULS0634080	80	160	206						0.8
100	FULS0634100	100	190	236						1
115	FULS0634115	115	210	256						1.2
120	FULS0634120									
130	FULS0634130	130	210	256						1.5
140	FULS0634140									
150	FULS0634150	150	230	276						1.7
160	FULS0634160	160	240	286						1.8
180	FULS0634180	180	260	306						2
200	FULS0634200	200	290	336						2.3
225	FULS0634225	225	310	356						2.5
250	FULS0634250	250	330	376						2.8
300	FULS0634300	300	390	436						3.3



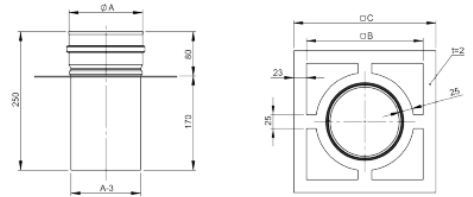


Sistem FURADO - F

FULS0634.1

međupotporanj sa kraćim potpornjem nakon pomaka

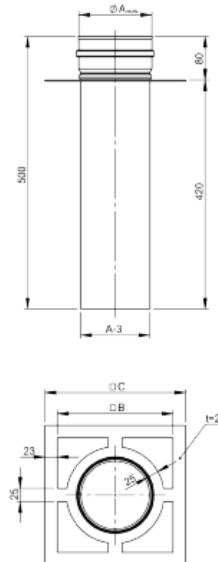
Ø	Code	A	B	C	D	E	F	G	H	kg
080	FULS0634.1080	80		78	140	186				1.3
100	FULS0634.1100	100		98	160	206				1.5
115	FULS0634.1115	115		113	190	236				1.5
120	FULS0634.1120	120		118	190	236				
130	FULS0634.1130	130		128	190	236				1.7
140	FULS0634.1140	140		138	210	256				
150	FULS0634.1150	150		149	210	256				1.9
160	FULS0634.1160	160		158	230	276				1.9
180	FULS0634.1180	180		178.4	240	286				2
200	FULS0634.1200	200		198	260	306				2.3
225	FULS0634.1225	225		223	290	336				2.3
250	FULS0634.1250	250		248	310	356				2.4
300	FULS0634.1300	300		298	360	406				2.7



FULS0635

međupotporanj za kompenzaciju ekspanzije prije pomaka 2.
revizija 2. T-komada (DW-FU iznad krova)

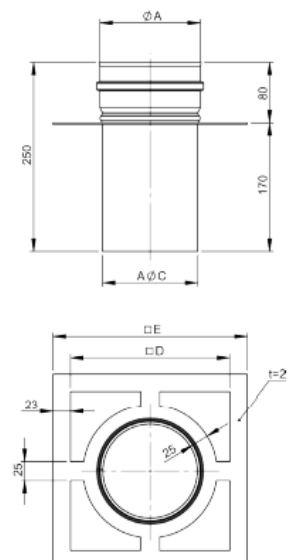
Ø	Code	A	B	C	D	E	F	G	H	kg
080	FULS0635080	80		78	160	206				0.8
100	FULS0635100	100		98	190	236				1
115	FULS0635115	115		113	210	256				1.1
120	FULS0635120									
130	FULS0635130	130		128	210	256				1.2
140	FULS0635140									
150	FULS0635150	150		149	230	276				1.5
160	FULS0635160	160		158	240	286				1.6
180	FULS0635180	180		178.4	260	306				1.7
200	FULS0635200	200		198	290	336				1.8
225	FULS0635225	225		223	310	356				1.9
250	FULS0635250	250		248	330	376				2
300	FULS0635300	300		298	390	436				2.3



FULS0635.1

međupotporanj sa kratkim potpornjem nakon pomaka za
dimenzije osovine DW-FU iznad krova

Ø	Code	A	B	C	D	E	F	G	H	kg
080	FULS0635.1080	80		78	160	206				1.3
100	FULS0635.1100	100		98	190	236				1.5
115	FULS0635.1115	115		113	210	256				1.5
120	FULS0635.1120									
130	FULS0634.1130	130		128	210	256				1.5
140	FULS0635.1140									
150	FULS0635.1150	150		149	230	276				1.7
160	FULS0635.1160	160		158	240	286				1.8
180	FULS0635.1180	180		178.4	260	306				1.9
200	FULS0635.1200	200		198	290	336				1.9
225	FULS0635.1225	225		223	310	356				1.9
250	FULS0635.1250	250		248	330	376				2
300	FULS0635.1300	300		298	390	436				2.3



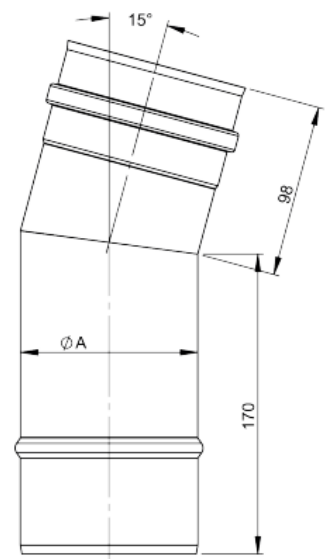


Sistem FURADO - F

FULS0617

koljeno 15° fiksno za pomak dolje

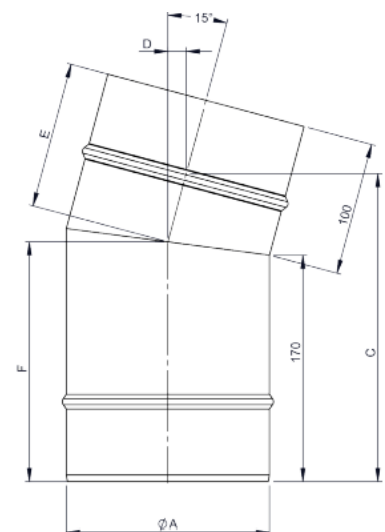
Ø	Code	A	B	C	D	E	F	G	H	kg
080	FULS0617080	80								0.5
100	FULS0617100	100								0.4
115	FULS0617115	115								0.5
120	FULS0617120	120								0.5
130	FULS0617130	130								0.6
140	FULS0617140	140								0.6
150	FULS0617150	150								0.7
160	FULS0617160	160								1
180	FULS0617180	180								1.2
200	FULS0617200	200								1.3
225	FULS0617225	225								1.4
250	FULS0617250	250								1.6
300	FULS0617300	300								2



FULS0617.1

koljeno 15° fiksno za pomak gore

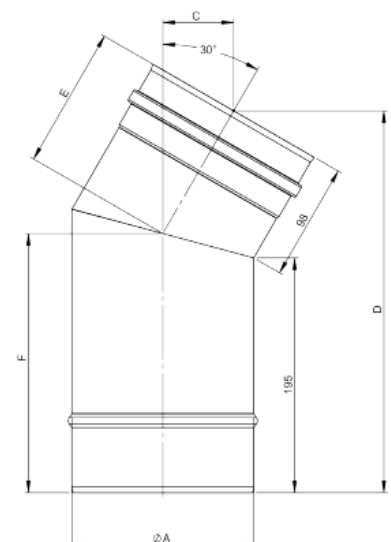
Ø	Code	A	B	C	D	E	F	G	H	kg
080	FULS0617.1080	80		222	13	175	105			0.35
100	FULS0617.1100	100		225	13	177	107			0.45
115	FULS0617.1115	115		227	13	178	108			0.51
120	FULS0617.1120	120		227	13	178	108			0.54
130	FULS0617.1130	130		228	13	179	109			0.59
140	FULS0617.1140	140		230	14	179	109			0.63
150	FULS0617.1150	150		231	14	180	110			0.68
160	FULS0617.1160	160		232	14	181	111			0.73
180	FULS0617.1180	180		235	14	182	112			0.83
200	FULS0617.1200	200		238	15	183	113			0.92
225	FULS0617.1225	225		241	15	185	115			1.05
250	FULS0617.1250	250		244	15	187	117			1.18
300	FULS0617.1300	300		250	16	190	120			1.44



FULS0618

koljeno 30° fiksno za pomak dolje

Ø	Code	A	B	C	D	E	F	G	H	kg
080	FULS0618080	80		54.41	300.07	108.83	205.83			0.39
100	FULS0618100	100		55.74	305.01	111.47	208.47			0.5
115	FULS0618115	115		56.74	308.75	113.48	210.48			0.58
120	FULS0618120	120		57.08	310.02	114.16	211.16			0.61
130	FULS0618130	130		57.74	312.49	115.48	212.48			0.66
140	FULS0618140	140		58.42	315.03	116.48	213.84			0.72
150	FULS0618150	150		59.17	317.82	118.34	215.34			0.78
160	FULS0618160	160		59.74	319.97	119.49	216.49			0.84
180	FULS0618180	180		61.13	325.14	122.26	219.26			0.96
200	FULS0618200	200		62.43	330	124.86	221.86			1.08
225	FULS0618225	225		64.12	336.28	128.23	225.23			1.23
250	FULS0618250	250		65.78	342.49	131.56	228.56			1.39
300	FULS0618300	300		69.15	355.06	138.3	235.3			1.74



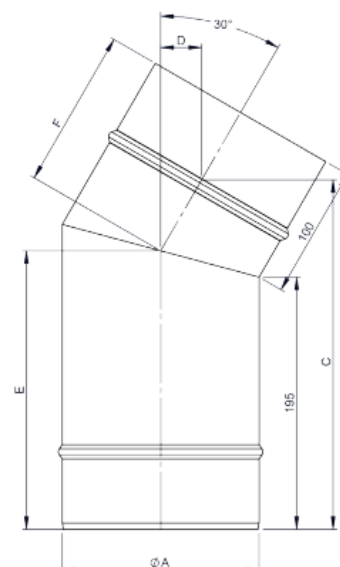


Sistem FURADO - F

FULS0618.1

koljeno 30° fiksno za pomak gore

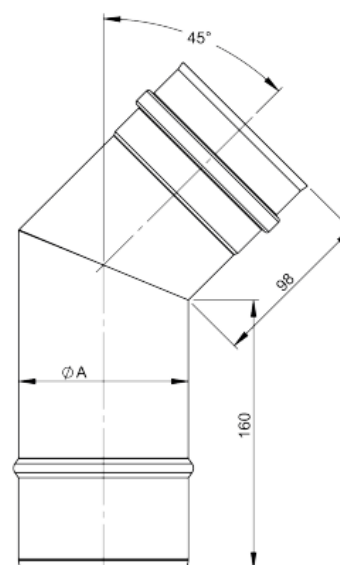
Ø	Code	A	B	C	D	E	F	G	H	kg
080	FULS0618.1080	80		253	27	206	111			0.4
100	FULS0618.1100	100		258	28	209	114			0.5
115	FULS0618.1115	115		261	29	211	116			0.59
120	FULS0618.1120	120		263	30	211	116			0.61
130	FULS0618.1130	130		265	30	213	118			0.67
140	FULS0618.1140	140		268	31	214	119			0.73
150	FULS0618.1150	150		270	32	215	120			0.79
160	FULS0618.1160	160		273	32	217	122			0.84
180	FULS0618.1180	180		278	34	219	124			0.96
200	FULS0618.1200	200		283	35	222	127			1.08
225	FULS0618.1225	225		289	37	225	130			1.24
250	FULS0618.1250	250		295	38	229	134			1.4
300	FULS0618.1300	300		308	42	235	140			1.74



FULS0619

koljeno 45° fiksno za pomak dolje

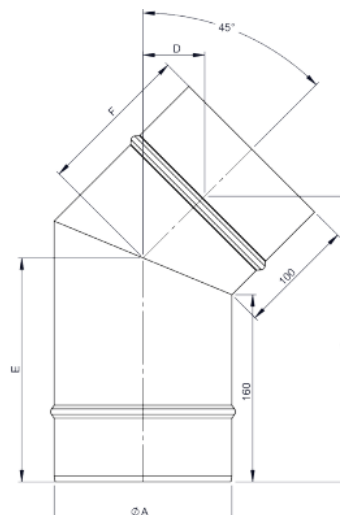
Ø	Code	A	B	C	D	E	F	G	H	kg
080	FULS0619080	80								0.5
100	FULS0619100	100								0.5
115	FULS0619115	115								0.6
120	FULS0619120	120								0.6
130	FULS0619130	130								0.6
140	FULS0619140	140								0.7
150	FULS0619150	150								0.8
160	FULS0619160	160								1.1
180	FULS0619180	180								1.2
200	FULS0619200	200								1.4
225	FULS0619225	225								1.6
250	FULS0619250	250								1.8
300	FULS0619300	300								2.2



FULS0619.1

koljeno 45° fiksno za pomak gore

Ø	Code	A	B	C	D	E	F	G	H	kg
080	FULS0619.1080	80		219	42	177	117			0.37
100	FULS0619.1100	100		226	45	181	121			0.47
115	FULS0619.1115	115		231	47	184	124			0.55
120	FULS0619.1120	120		233	48	185	125			0.58
130	FULS0619.1130	130		237	50	187	127			0.64
140	FULS0619.1140	140		240	51	189	129			0.7
150	FULS0619.1150	150		244	53	191	131			0.76
160	FULS0619.1160	160		247	54	193	133			0.81
180	FULS0619.1180	180		255	57	198	138			0.94
200	FULS0619.1200	200		261	60	202	142			1.07
225	FULS0619.1225	225		270	64	207	147			1.23
250	FULS0619.1250	250		279	67	212	152			1.41
300	FULS0619.1300	300		297	74	222	162			1.78





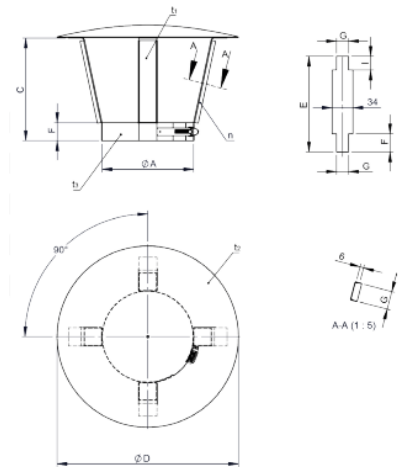
Sistem FURADO - F

FU28

protukišna kapa



za Ø	Code	A	B	C	D	E	F	G	H	I	n ¹	kg
080	FU28080	80		135	205	162	20	15		25	3	0.31
100	FU28100	100		140	205	167	25	25		25	3	0.33
115	FU28115	115		140	205	160	30	25		18	3	0.33
120	FU28120	120		140	240	167	30	25		25	3	0.39
130	FU28130	130		155	260	182	30	25		25	3	0.45
140	FU28140	140		160	285	187	30	25		25	3	0.51
150	FU28150	150		170	300	197	30	25		25	3	0.55
160	FU28160	160		180	320	208	30	25		25	3	0.61
180	FU28180	180		200	360	228	30	25		25	4	0.73
200	FU28200	200		200	400	228	30	25		25	4	0.86

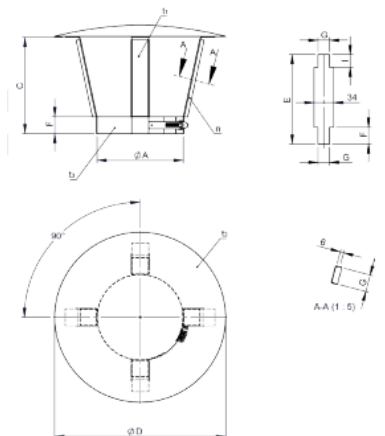


FU28

protukišna kapa



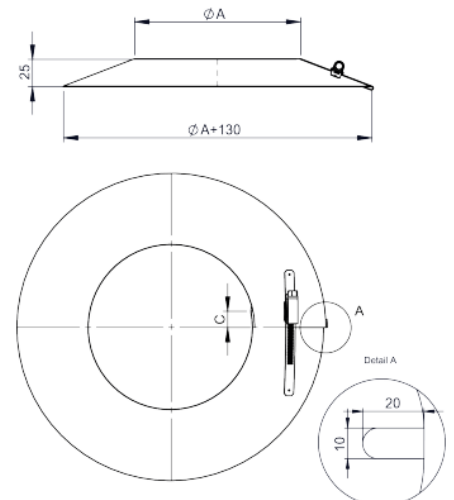
za Ø	Code	A	B	C	D	E	F	G	H	I	n ¹	n ²	kg
225	FU28225	225		230	430	259	30	25		25	4	3	0.98
250	FU28250	250		250	490	279	40	25		25	4	3	1.45
300	FU28300	300		300	500	330	50	25		25	4	4	1.58



FU72

obruč protiv padalina/zidna rozeta

za Ø	Code	A	B	C	D	E	F	G	H	kg
080	FU72080	80								0.17
100	FU72100	100								0.19
115	FU72115	115								0.21
120	FU72120	120								0.21
130	FU72130	130								0.22
140	FU72140	140								0.23
150	FU72150	150								0.24
160	FU72160	160								0.25
180	FU72180	180								0.28
200	FU72200	200								0.29
225	FU72225	225								0.32
250	FU72250	250								0.34
300	FU72300	300								0.39





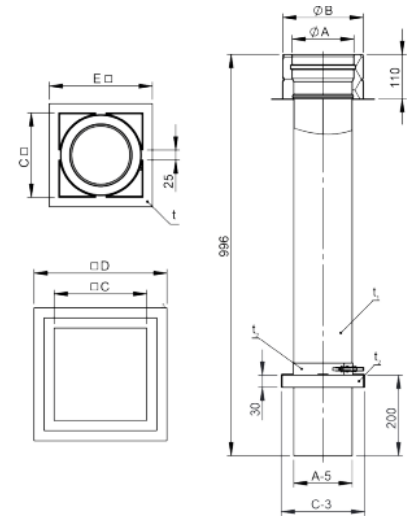
Sistem FURADO - F

KOMPONENTE DW - ECO 2.0

DWETNLS91

sidrena ploča 1000 mm sa prijelazom
na DW-ECO 2.0

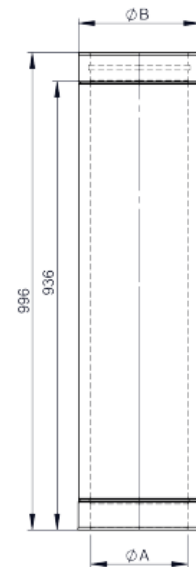
Ø	Code	A	B	C	D	E	F	G	H	kg
080	205-DWETNLS91080	80	130	140	240	186				2.6
100	205-DWETNLS91100	100	150	160	260	206				3.2
115	205-DWETNLS91115	115	165	190	290	236				4.1
130	205-DWETNLS91130	130	180	190	290	236				4.1
150	205-DWETNLS91150	150	200	210	210	256				4.6
160	205-DWETNLS91160	160	210	230	330	276				4.9
180	205-DWETNLS91180	180	230	240	340	286				5.5
200	205-DWETNLS91200	200	250	260	360	306				6
250	205-DWETNLS91250	250	300	310	410	356				7.4
300	205-DWETNLS91300	300	350	360	460	406				8.8



DWETN13

cijev 1000 mm

Ø	Code	A	B	C	D	E	F	G	H	kg
080	205-DWETN13080	80	130							4.15
100	205-DWETN13100	100	150							4.96
115	205-DWETN13115	115	164							5.52
130	205-DWETN13130	130	180							6.1
150	205-DWETN13150	150	200							6.9
160	205-DWETN13160	160	210							7.3
180	205-DWETN13180	180	230							8.1
200	205-DWETN13200	200	250							8.9
250	205-DWETN13250	250	300							10.8
300	205-DWETN13300	300	350							12.8

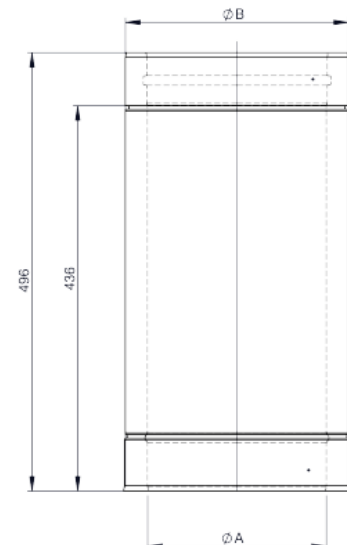


DWETN14

cijev 500 mm



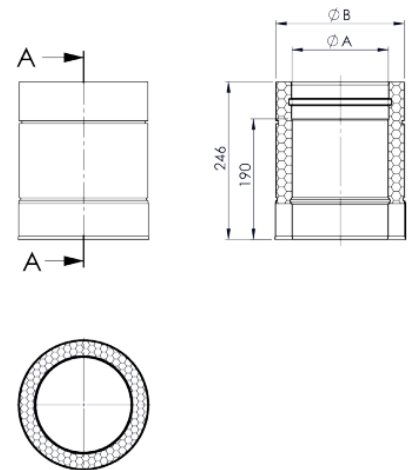
Ø	Code	A	B	C	D	E	F	G	H	kg
080	205-DWETN14080	80	130							2.1
100	205-DWETN14100	100	150							2.5
115	205-DWETN14115	115	164							2.78
130	205-DWETN14130	130	180							3.1
150	205-DWETN14150	150	200							3.5
160	205-DWETN14160	160	210							3.6
180	205-DWETN14180	180	230							4
200	205-DWETN14200	200	250							4.4
250	205-DWETN14250	250	300							5.4
300	205-DWETN14300	300	350							6.5





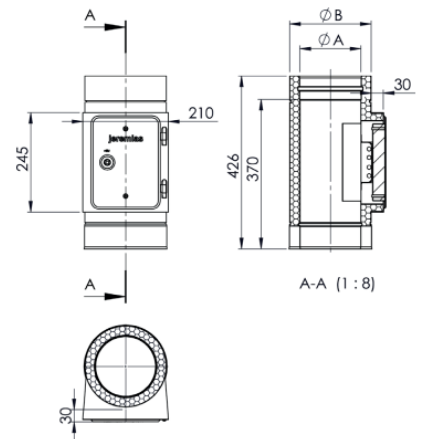
Sistem FURADO - F

DWETN15
cijev 250 mm



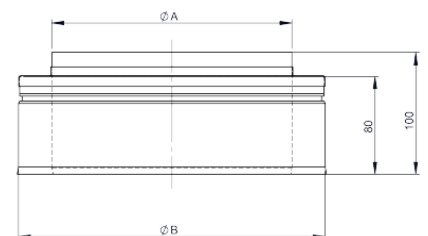
Ø	Code	A	B	C	D	E	F	G	H	kg
080	205-DWETN15080	80	130							0.8
100	205-DWETN15100	100	150							1
115	205-DWETN15115	115	165							1.1
130	205-DWETN15130	130	180							1.2
150	205-DWETN15150	150	200							1.4
160	205-DWETN15160	160	210							1.5
180	205-DWETN15180	180	230							1.6
200	205-DWETN15200	200	250							1.8
250	205-DWETN15250	250	300							2.2
300	205-DWETN15300	300	350							2.6

DWETN10
element sa revizijom (do 600°C/N1)



Ø	Code	A	B	C	D	E	F	G	H	kg
080	205-DWETN10080	80	130							2.7
100	205-DWETN10100	110	150							2.9
115	205-DWETN10115	115	165							3.1
130	205-DWETN10130	130	180							3.4
150	205-DWETN10150	150	200							3.6
160	205-DWETN10160	160	210							3.8
180	205-DWETN10180	180	230							4
200	205-DWETN10200	200	250							4.3
250	205-DWETN10250	250	300							5
300	205-DWETN10250	300	350							5.6

DWETN32
završni komad (do 600°C/N1)



Ø	Code	A	B	C	D	E	F	G	H	kg
080	205-DWETN32080	78	130							0.4
100	205-DWETN32100	98	150							0.5
115	205-DWETN32115	113	165							0.5
130	205-DWETN32130	128	180							0,6
150	205-DWETN32150	149	200							0,6
160	205-DWETN32160	158	210							0,7
180	205-DWETN32180	178	230							0,8
200	205-DWETN32200	198	250							0,9
250	205-DWETN32250	248	300							1
300	205-DWETN32300	298	350							1,5

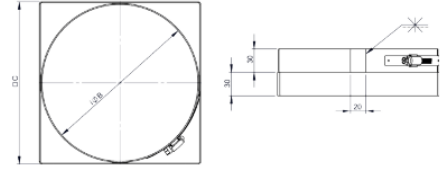


Sistem FURADO - F

DWECOLS1766

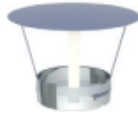
obujmice za učvršćivanje u šaftu

Ø	Code	A	B	C	D	E	F	G	H	kg
080	DWECOLS1766080	80	130							
100	DWECOLS1766100	100	150							
115	DWECOLS1766115	115	165							
130	DWECOLS1766130	130	180							
150	DWECOLS1766150	150	200							
160	DWECOLS1766160	160	210							
180	DWECOLS1766180	180	230							
200	DWECOLS1766200	200	250							
250	DWECOLS1766250	250	300							
300	DWECOLS1766300	250	300							

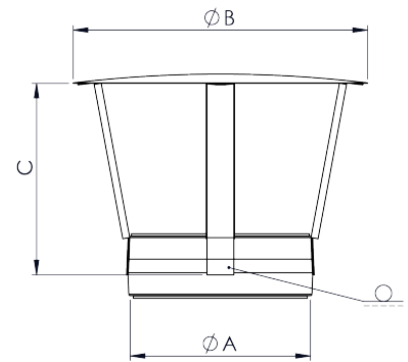


DWECO33

protukišna kapa (do 600 °C/N1)

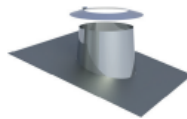


za Ø	Code	A	B	C	D	E	F	G	H	kg
080	215-DWECO33080	130	280	175						0.6
100	215-DWECO33100	150	300	175						0.6
115	215-DWECO33115	165	300	175						0.7
130	215-DWECO33130	180	300	175						0.7
150	215-DWECO33150	200	360	215						0.8
160	215-DWECO33160	210	360	220						0.9
180	215-DWECO33180	230	410	240						1
200	215-DWECO33200	250	450	250						1.2
250	215-DWECO33250	300	510	300						1.2
300	215-DWECO33300	350	600	345						1.6

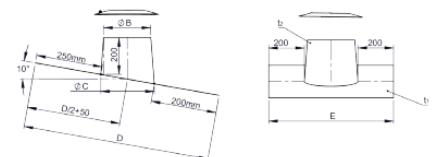


DWECO53

krovni opšav 5°-15° sa olovnim rubom i obruĉem protiv padalina



za Ø	Code	A	B	C	D	E	F	G	H	kg
080	DWECO53080		195	230	1000	630				7.66
100	DWECO53100		215	250	1000	650				7.87
115	DWECO53115		230	265	1000	665				8.06
130	DWECO53130		245	280	1000	680				8.21
150	DWECO53150		265	300	1000	700				8.42
160	DWECO53160		275	310	1000	710				8.54
180	DWECO53180		295	330	1000	730				8.72
200	DWECO53200		315	350	1000	750				8.93
250	DWECO53250		365	400	1000	800				9.38
300	DWECO53300		415	450	1000	850				9.81

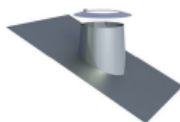




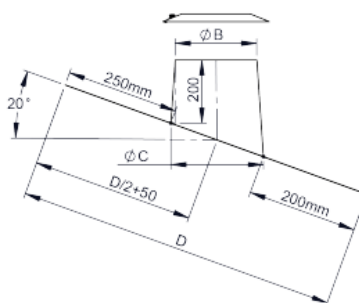
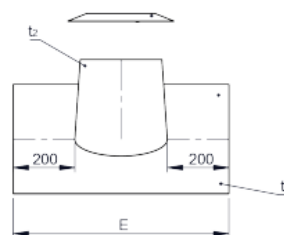
Sistem FURADO - F

DWECO59

krovni opšav 16°-25° sa olovnim rubom i
obručem protiv padalina

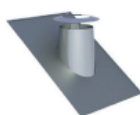


za Ø	Code	A	B	C	D	E	F	G	H	kg
080	DWECO59080		195	230	1000	630				8.39
100	DWECO59100		215	250	1000	650				8.41
115	DWECO59115		230	265	1000	665				8.43
130	DWECO59130		245	280	1000	680				8.94
150	DWECO59150		265	300	1000	700				9.17
160	DWECO59160		275	310	1000	710				9.3
180	DWECO59180		295	330	1000	730				9.51
200	DWECO59200		315	350	1000	750				9.73
250	DWECO59250		365	400	1000	800				10.2
300	DWECO59300		415	450	1000	850				10.7

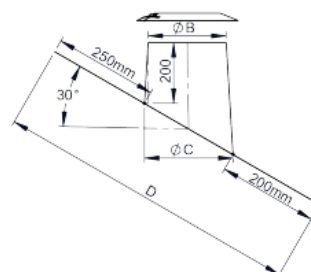
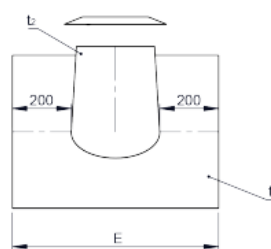


DWECO38

krovni opšav 26°-35° sa olovnim rubom i
obručem protiv padalina

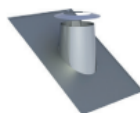


za Ø	Code	A	B	C	D	E	F	G	H	kg
080	DWECO38080		195	230	1000	630				7.68
100	DWECO38100		215	250	1000	650				7.89
115	DWECO38115		230	265	1000	665				8.07
130	DWECO38130		245	280	1000	680				8.22
150	DWECO38150		265	300	1000	700				8.43
160	DWECO38160		275	310	1000	710				8.54
180	DWECO38180		295	330	1000	730				8.73
200	DWECO38200		315	350	1000	750				8.94
250	DWECO38250		365	400	1000	800				9.4
300	DWECO38300		415	450	1000	850				9.82

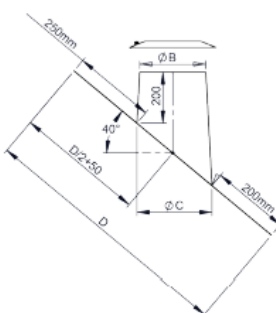
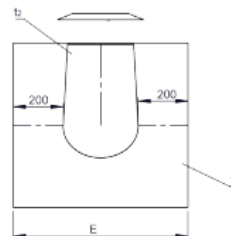


DWECO54

krovni opšav 36°-45° sa olovnim rubom i
obručem protiv padalina



za Ø	Code	A	B	C	D	E	F	G	H	kg
080	DWECO54080		195	230	1000	630				7.41
100	DWECO54100		215	250	1000	650				7.73
115	DWECO54115		230	265	1000	665				7.81
130	DWECO54130		245	280	1000	680				8.09
150	DWECO54150		265	300	1000	700				8.27
160	DWECO54160		275	310	1000	710				8.38
180	DWECO54180		295	330	1000	730				8.67
200	DWECO54200		315	350	1000	750				8.98
250	DWECO54250		365	400	1000	800				9.54
300	DWECO54300		415	450	1040	850				10.2

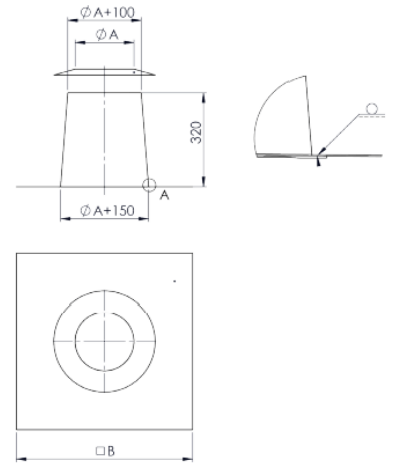
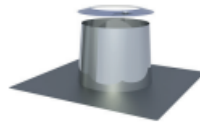




Sistem FURADO - F

DWECO52

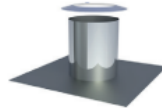
opšav ravni krov konusni sa obručem protiv padalina



za Ø	Code	A	B	C	D	E	F	G	H	kg
080	DWECO52080	080	530							2
100	DWECO52100	100	550							2.2
115	DWECO52115	115	565							2.3
130	DWECO52130	130	580							2.4
150	DWECO52150	150	600							2.6
160	DWECO52160	160	610							2.6
180	DWECO52180	180	630							2.8
200	DWECO52200	200	650							3
250	DWECO52250	250	700							3.4
300	DWECO52300	300	750							3.8

DWECO52ZY

opšav ravni krov cilindrični sa obručem protiv padalina



za Ø	Code	A	B	C	D	E	F	G	H	kg
080	DWECO52080ZY	195	595							
100	DWECO52100ZY	215	615							
115	DWECO52115ZY	230	630							
130	DWECO52130ZY	245	645							
150	DWECO52150ZY	265	665							
160	DWECO52160ZY	275	675							
180	DWECO52180ZY	295	695							
200	DWECO52200ZY	315	715							
250	DWECO52250ZY	365	765							
300	DWECO52300ZY	415	815							



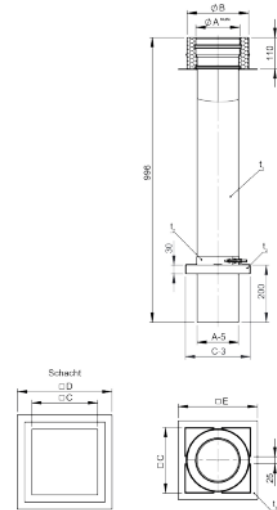
Sistem FURADO - F

KOMPONENTE DW - FU

DWLS91

sidrena ploča 1000 mm sa prijelazom na DW-FU

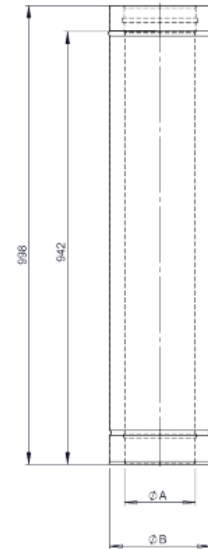
Ø	Code	A	B	C	D	E	F	G	H	kg
080	DWLS91080	80	145	160	260	206				2.7
100	DWLS91100	100	165	190	290	236				2.3
115	DWLS91115	115	180	210	310	256				3.74
130	DWLS91130	130	195	210	310	256				4.13
150	DWLS91150	150	215	230	330	276				4.67
160	DWLS91160	160	225	240	340	286				4.94
180	DWLS91180	180	245	260	360	306				5.51
200	DWLS91200	200	265	290	390	336				6.11
225	DWLS91225	225	290	310	410	356				6.82
250	DWLS91250	250	315	330	410	376				7.46



DW13

cijev 1000 mm

Ø	Code	A	B	C	D	E	F	G	H	kg
080	DW13080	80	145							4,9
100	DW13100	100	165							5,7
115	DW13115	115	180							6,3
130	DW13130	130	195							7
150	DW13150	150	215							7,8
160	DW13160	160	225							8,2
180	DW13180	180	245							9,1
200	DW13200	200	265							9,9
225	DW13225	225	290							11
250	DW13250	250	315							12

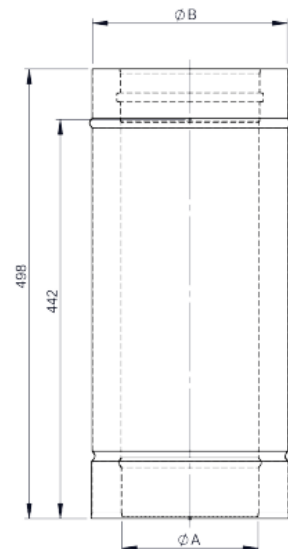


DW14

cijev 500 mm



Ø	Code	A	B	C	D	E	F	G	H	kg
080	DW14080	80	145							2.6
100	DW14100	100	165							3
115	DW14115	115	180							3.2
130	DW14130	130	195							3.6
150	DW14150	150	215							4.1
160	DW14160	160	225							4.3
180	DW14180	180	245							4.7
200	DW14200	200	265							5.2
225	DW14225	225	290							5.7
250	DW14250	250	315							6.3



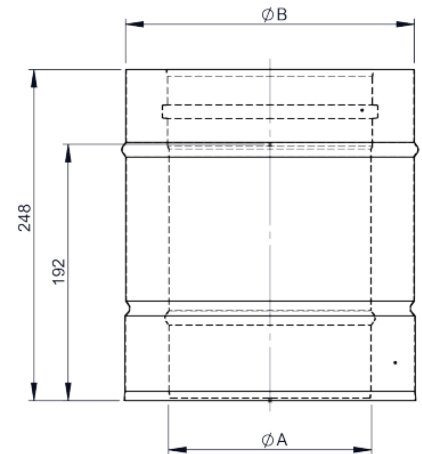


Sistem FURADO - F

DW15
cijev 250 mm



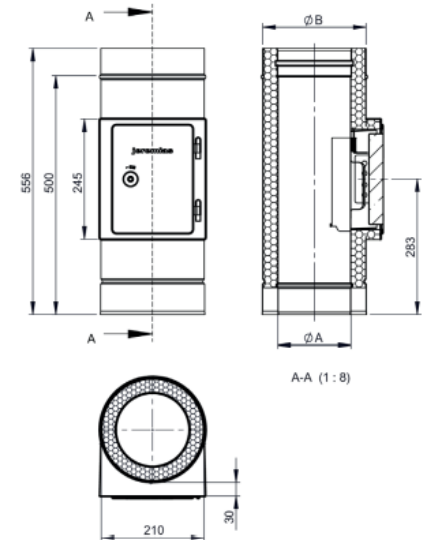
Ø	Code	A	B	C	D	E	F	G	H	kg
080	DW15080	80	145							1,4
100	DW15100	100	165							1,6
115	DW15115	115	180							1,7
130	DW15130	130	195							1,9
150	DW15150	150	215							2,1
160	DW15160	160	225							2,2
180	DW15180	180	245							2,5
200	DW15200	200	265							2,7
225	DW15225	225	290							3
250	DW15250	250	315							3.3



DW10
element sa revizijom (do 600 °C/N1)



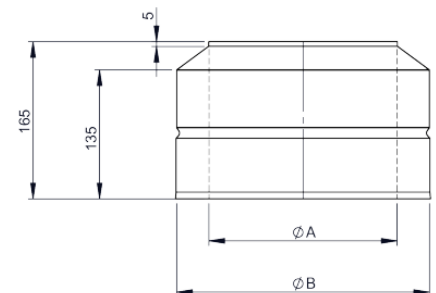
Ø	Code	A	B	C	D	E	F	G	H	kg
080	DW10080	80	145							5.93
100	DW10100	100	165							6.45
115	DW10115	115	180							6.85
130	DW10130	130	195							7.23
150	DW10150	150	215							7.69
160	DW10160	160	225							7.81
180	DW10180	180	245							8.26
200	DW10200	200	265							8.72
225	DW10225	225	290							9.3
250	DW10250	250	315							9.89



DW32
završni komad (do 600°C/N1)



Ø	Code	A	B	C	D	E	F	G	H	kg
080	DW32080	78	145							0.7
100	DW32100	98	165							0.8
115	DW32115	113	180							0.9
130	DW32130	128	195							1
150	DW32150	149	215							1.1
160	DW32160	158	225							1.2
180	DW32180	178	245							1.3
200	DW32200	198	265							1.5
225	DW32225	223	290							1.6
250	DW32250	248	315							1.8





Sistem FURADO - F

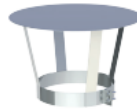
DWLS1766

obujmice za učvršćivanje u šaftu

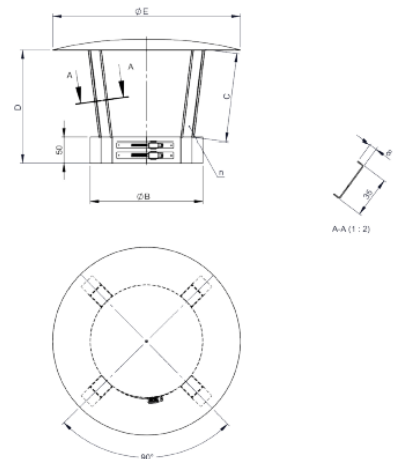
za Ø	Code	A	B	C	D	E	F	G	H	kg
080	DWLS1766080									0.39
100	DWLS1766100									0.44
115	DWLS1766115									0.47
130	DWLS1766130									0.52
150	DWLS1766150									0.57
160	DWLS1766160									0.61
180	DWLS1766180									0.65
200	DWLS1766200									0.7
225	DWLS1766225									
250	DWLS1766250									0.83

DW33

protukišna kapa (do 600 °C/N1)

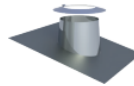


za Ø	Code	A	B	C	D	E	F	G	H	kg
080	DW33080		145	280	175	280				0.8
100	DW33100		165	300	175	300				0.9
115	DW33115		180	300	175	300				0.9
130	DW33130		195	330	215	330				1.1
150	DW33150		215	360	220	360				1.2
160	DW33160		225	360	220	360				1.2
180	DW33180		245	410	240	410				1.5
200	DW33200		265	450	250	450				1.8
225	DW33225		290	470	250	470				1.9
250	DW33250		315	510	300	510				2.2

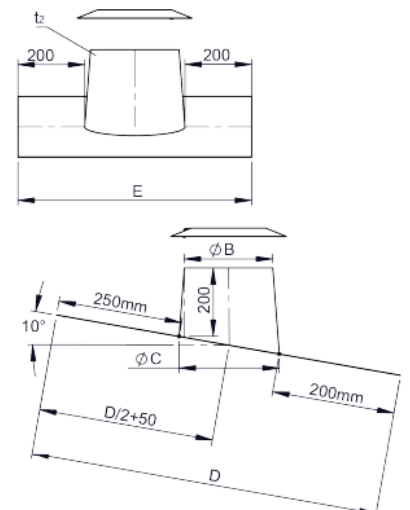


DW53

krovni opšav 5°-15° sa olovnim rubom i obrućem protiv padalina



za Ø	Code	A	B	C	D	E	F	G	H	kg
080	DW53080		195	230	1000	630				6.27
100	DW53100		215	250	1000	650				6.47
115	DW53115		230	265	1000	665				6.62
130	DW53130		245	280	1000	680				6.75
150	DW53150		265	300	1000	700				6.94
160	DW53160		275	310	1000	710				7.03
180	DW53180		295	330	1000	730				7.18
200	DW53200		315	350	1000	750				7.38
225	DW53225		340	375	1000	775				7.59
250	DW53250		365	400	1000	800				7.79

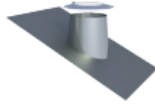




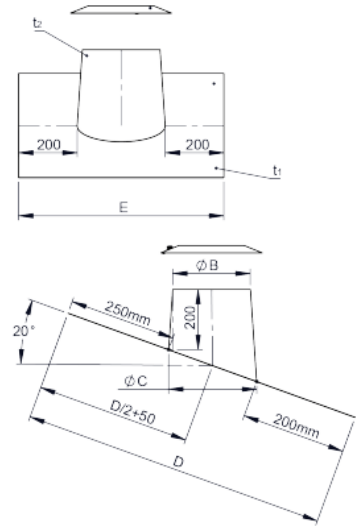
Sistem FURADO - F

DW59

krovni opšav 16°-25° sa olovnim rubom i
obručem protiv padalina

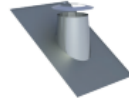


za Ø	Code	A	B	C	D	E	F	G	H	kg
080	DW59080		195	230	1000	630				6.29
100	DW59100		215	250	1000	650				6.49
115	DW59115		230	265	1000	665				6.64
130	DW59130		245	280	1000	680				6.79
150	DW59150		265	300	1000	700				6.98
160	DW59160		275	310	1000	710				7.08
180	DW59180		295	330	1000	730				7.24
200	DW59200		315	350	1000	750				7.45
225	DW59225		340	375	1000	775				7.66
250	DW59250		365	400	1000	800				7.88

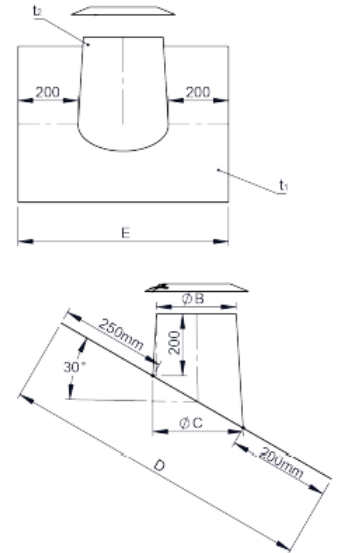


DW38

krovni opšav 26°-35° sa olovnim rubom i obručem
protiv padalina

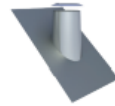


za Ø	Code	A	B	C	D	E	F	G	H	kg
080	DW38080		195	230	1000	630				6.3
100	DW38100		215	250	1000	650				6.51
115	DW38115		230	265	1000	665				6.66
130	DW38130		245	280	1000	680				6.98
150	DW38150		265	300	1000	700				7.11
160	DW38160		275	310	1000	710				7.22
180	DW38180		295	330	1000	730				7.28
200	DW38200		315	350	1000	750				7.49
225	DW38225		340	375	1000	775				7.72
250	DW38250		365	400	1000	800				7.94

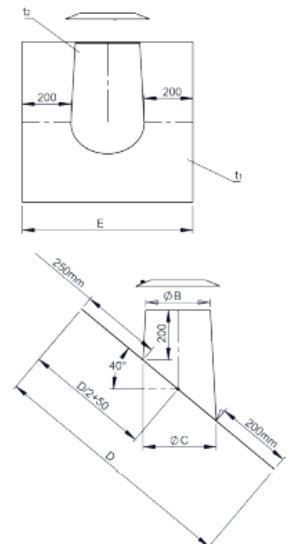


DW54

krovni opšav 36°-45° sa olovnim rubom i obručem
protiv padalina



za Ø	Code	A	B	C	D	E	F	G	H	kg
080	DW54080		195	230	1000	630				6.29
100	DW54100		215	250	1000	650				6.51
115	DW54115		230	265	1000	665				6.66
130	DW54130		245	280	1000	680				6.81
150	DW54150		265	300	1000	700				7.01
160	DW54160		275	310	1000	710				7.11
180	DW54180		295	330	1000	730				7.29
200	DW54200		315	350	1000	750				7.51
225	DW54225		340	375	1000	775				7.75
250	DW54250		365	400	1000	800				8

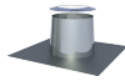




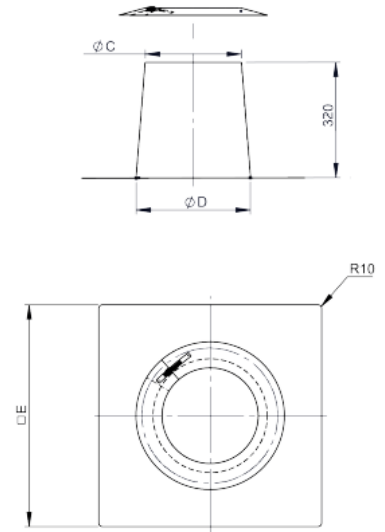
Sistem FURADO - F

DW52

opšav ravni krov konusni + obruč protiv padalina

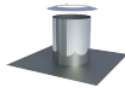


za Ø	Code	A	B	C	D	E	F	G	H	kg
080	DW52080	80		195	245	545				3.93
100	DW52100	100		215	265	565				3.59
115	DW52115	115		230	280	580				3.73
130	DW52130	130		245	295	595				3.88
150	DW52150	150		265	315	615				4.13
160	DW52160	160		275	325	625				4.17
180	DW52180	180		295	345	645				4.37
200	DW52200	200		315	365	665				4.56
225	DW52225	225		340	390	690				4.8
250	DW52250	250		365	415	715				4.83

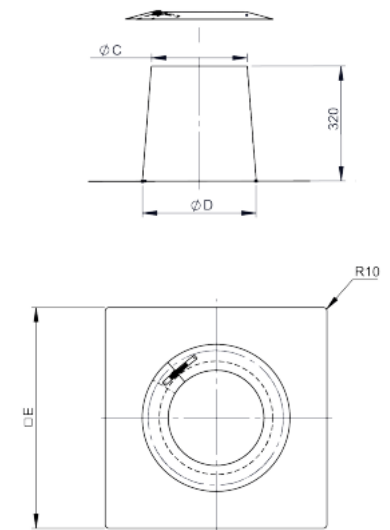


DW52ZY

opšav ravni krov cilindrični i obručem protiv padalina



za Ø	Code	A	B	C	D	E	F	G	H	kg
080	DW52080ZY	195	595							
100	DW52100ZY	215	615							
115	DW52115ZY	230	630							
130	DW52130ZY	245	645							
150	DW52150ZY	265	665							
160	DW52160ZY	275	675							
180	DW52180ZY	295	695							
200	DW52200ZY	315	715							
225	DW52225ZY	340	740							
250	DW52250ZY	365	765							





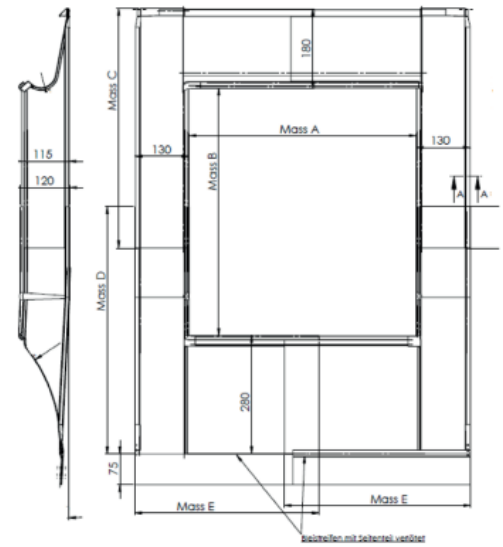
Sistem FURADO - F

KOMPONENTE PRIBOR

LS1762-1

opšav kamina FURADO-F

Ø izvana	Ø iznutra	Code	A	B	C	D	E	F	kg
240x240	140x140	LS1762-1	240	245	420	550	360		
260x260	160x160	LS1762-1	240	245	420	550	360		
290x290	190x190	LS1762-1	240	245	420	550	360		
310x310	210x210	LS1762-1	240	245	420	550	360		



LS1762-2

opšav kamina FURADO-F

Ø izvana	Ø iznutra	Code	A	B	C	D	E	F	kg
330x330	230x230	LS1762-2	320	560	575	600	440		
340x340	240x240	LS1762-2	320	560	575	600	440		
360x360	260x260	LS1762-2	320	560	575	600	440		
410x410	310x310	LS1762-2	320	560	575	600	440		

